

Libraries Needs Assessment Appendix Comprehensive Review Data



Comprehensive Review Data

The following table provides details of the 35 council-run Community Libraries against each of the criteria considered within the comprehensive review of the data as detailed in the City Observatory dashboard. The library usage data within the tables are from operational service data recorded between January - October 2023.

Library scorecards have been created for the 35 council-run libraries included within the library statutory consultation, outlining the current community usage, demographic profile, building information and ward information.

The scorecards can be found at www.birmingham.gov.uk/budgetconsultations



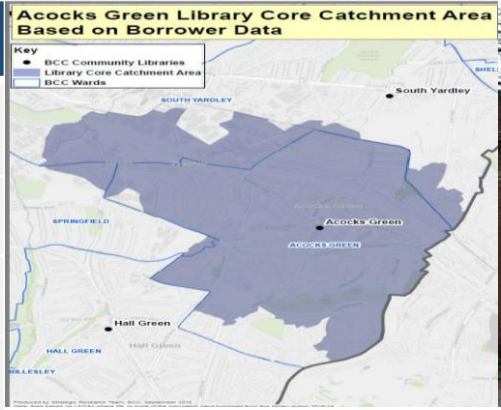
- The Index of Multiple Deprivation 2019 ranks small areas from most deprived to least deprived and divides them into 10 equal groups (deciles) Decile 1 represents the most deprived 10% while decile 10 represents the least deprived 10% in England.
- At a more local level, IMD scores have been aggregated to calculate ward deprivation rankings. This allows us to show Birmingham’s 69 wards ranked by their aggregate IMD score from 1 the most deprived to 69 the least deprived.)

Library Name	Ward	Items issued (by kiosk or desk)	Computer Useage	Number of users (Membership reserve)	IMD Rank (69 is the lowest deprivation and 1 is highest)	Tier of each library	Travel distance to nearest alternative library	Journey time by car (from library location to nearest alternative Library) - less than 20 mins	Journey time by public transport to alternative library - (from library location to nearest alternative Library) around or less than 30 mins	IMD Decile (where 1 is 10% most deprived nationally)	Building condition & maintenance cost (High = high suitability, low = lower suitability) High suitability <£100K, Medium suitability £100K-£230K, Low suitability >£230K (based on 2018 and 2021 condition surveys)	Number of new members added within the last year
Acocks Green Library	Yardley	25,046	3,677	53,797	36	1	South Yardley (1.15 miles away)	Yes	Yes	2	Low	2,494
Aston Library	Ladywood	2,905	135	10,419	14	3	Birchfield (0.52 miles away)	Yes	Yes	1	High	294
Balsall Heath Library	Hall Green	18,475	2,654	31,771	9	1	Sparkhill (1.09 miles away)	Yes	Yes	1	Under refurbishment	514
Bartley Green Library	Edgbaston	4,156	332	8,337	31	3	Weoley Castle (1.26 miles away)	Yes	Yes	2	Low	175
Birchfield Library	Ladywood	17,753	1,031	29,348	14	2	Aston Library (784 yards away)	Yes	Yes	1	Medium	547
Bloomsbury Library	Ladywood	4,331	No data available	8,364	24	3	Aston Library (1.08 miles away)	Yes	Yes	1	Not a BCC building	116
Boldmere Library	Sutton Coldfield	23,307	494	35,873	65	2	Sutton Coldfield (1.28 miles away)	Yes	Yes	7	High	406
Druids Heath Library	Selly Oak	11,409	749	19,690	25	2	Yardley Wood (1.45 miles away)	Yes	Yes	1	Medium	338
Erdington Library	Erdington	34,379	4,639	59,986	38	1	Boldmere (1.46 miles away)	Yes	Yes	3	Low	1,261
Frankley Library	Northfield	5,419	435	9,636	22	2	Northfield (2.21 miles away)	Yes	Yes	1	Not a BCC building	171
Glebe Farm Library	Yardley	6,244	358	11,362	15	3	Shard End (0.84 miles away)	Yes	Yes	1	High	254
Hall Green Library	Hall Green	40,614	1,889	58,722	50	1	Yardley (1.2 miles away)	Yes	Yes	3	Low	755
Handsworth Library	Perry Barr	15,220	4,463	35,450	16	1	Birchfield (1.24 miles away)	Yes	Yes	1	Medium	1,044
Harborne Library	Edgbaston	59,774	3,110	88,294	55	1	Selly Oak (1.32 miles away)	Yes	Yes	3	Low	1,247
Kings Heath Library	Hall Green	31,755	3,110	87,068	53	1	Balsall Heath (1.39 miles away)	Yes	Yes	3	Medium	1,174
Kings Norton Library	Northfield	30,921	2,128	45,310	44	1	Stirchley (1.34 miles away)	Yes	Yes	2	Low	527
Kingstanding Library	Perry Barr	11,778	881	21,701	52	2	Perry Common (1.2 miles away)	Yes	Yes	3	High	454
Mere Green Library	Sutton Coldfield	62,991	1,486	90,862	66	1	Sutton Coldfield (1.73 miles away)	Yes	Yes	7	High	889
Northfield Library	Northfield	40,618	2,759	66,398	59	1	Weoley Castle (1.61 miles away)	Yes	Yes	4	Low	1,045
Perry Common Library	Perry Barr	13,428	1,297	23,303	12	2	Kingstanding (1.24 miles away)	Yes	Yes	1	Low	529
Quinton Library	Edgbaston	32,900	1,506	50,666	51	1	Harborne (1.54 miles away)	Yes	Yes	3	Low	709
Selly Oak Library	Northfield	5,464	No data available	13,707	60	3	Stirchley (1.17 miles away)	Yes	Yes	5	Not a BCC building	263
Shard End Library	Hodge Hill	13,149	2,092	25,081	11	1	Glebe Farm (0.56 miles away)	Yes	Yes	1	High	649
Sheldon Library	Yardley	9,819	336	18,232	45	2	South Yardley (1.31 miles away)	Yes	Yes	3	Low	425
Small Heath Library	Ladywood	22,905	3,200	45,684	21	1	Bloomsbury (1.52 miles away)	Yes	Yes	1	High	1,014
South Yardley Library	Yardley	38,640	4,420	60,112	48	1	Acocks Green (1.06 miles away)	Yes	Yes	3	Medium	1,035
Sparkhill Library	Hall Green	25,916	3,046	46,067	30	1	Balsall Heath (1.06 miles away)	Yes	Yes	2	Low	939
Spring Hill Library*	Ladywood		28	5,245	29	2	Library of Birmingham (0.68 miles away)	Yes	Yes	2	Closed (Low)	65
Stirchley Library	Selly Oak	33,219	870	45,710	46	3	Selly Oak (1.04 miles away)	Yes	Yes	3	Medium	544
Sutton Coldfield Library	Sutton Coldfield	32,026	3,216	50,964	63	1	Boldmere (1.3 miles away)	Yes	Yes	6	Low	815
Tower Hill Library	Perry Barr	19,487	934	31,336	56	2	Perry Common (1.87 miles away)	Yes	Yes	4	Low	497
Walmley Library	Sutton Coldfield	25,987	915	37,806	64	2	Castle Vale (2.15 miles away)	Yes	Yes	7	Medium	428
Ward End Library	Hodge Hill	24,723	3,452	50,495	18	1	Bloomsbury library at The pod (1.54 miles away)	Yes	Yes	1	Medium	1,148
Weoley Castle Library	Northfield	19,922	2,224	34,728	35	1	Bartley Green (1.27 miles away)	Yes	Yes	2	Low	805
Yardley Wood Library	Selly Oak	40,911	1,577	60,917	34	1	Hall Green (1.17 miles away)	Yes	Yes	2	Low	706

*Spring Hill library closed as of Spring 2022

Acocks Green Library

Opening hours (per week)	35 hrs
Constituency	Acocks Green
Ward	South Yardley
Population size (Census 2021)	24,456



Acocks Green Library
 Shirley Road
 B27 7XH

Stage 1

Usage (Calendar Year 2023)	Computer Usage	3,677	Items Issued	25,046
----------------------------	----------------	-------	--------------	--------

Stage 2

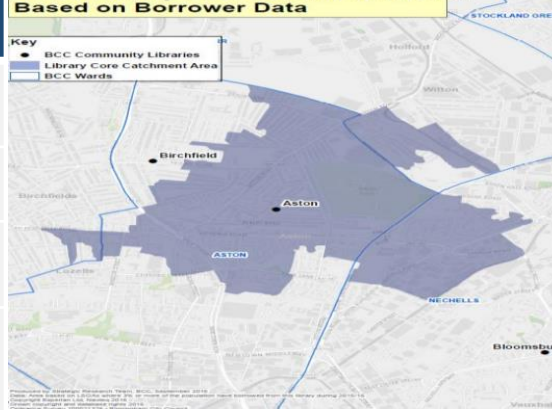
Community Need		Accessibility			
Index of Multiple Deprivation (IMD) Score (1 = most deprived 10 = least deprived)	2	Journey time by car (from library location to nearest alternative Library) - less than 20 mins	Yes	Journey time by public transport to alternative library - (from library location to nearest alternative Library) around or less than 30 mins	Yes
Travel distance to nearest alternative library	South Yardley (1.15 miles away)				
Tier	1	Number of users (membership reserve)		53,797	
Building condition & maintenance costs suitability	Low	Number of new members added within the last year		2,494	

Summary of library and area information

- Acocks Green has a rank of 36 out of 69 wards in Birmingham and is in Decile 2. Of the 69 wards, 43 wards are in the top 20% most deprived (deciles 1 and 2) in the country.
- There are 24,456 people living in Acocks Green, 22.0% of the area population are aged 0-15 years old and 12.7% are aged 65 and over.
- The largest ethnic group in Acocks Green is White, which accounts for 50.2% of the area population.
- The largest religion within the area is Christian, which accounts for 34.8% of the ward population. This is followed by Muslim, which accounts for 31.5% of the area population.
- In Acocks Green the proportion of all children aged 0 to 15 living in income deprived families is 26.4 and the proportion of those aged 60 or over who experience income deprivation is 29.2.
- In Acocks Green, 18.9% of the population were disabled according to the Equality Act 2010, compared to 17.3% in Birmingham.
- In Acocks Green, 44.3% are in very good health, 0.03% change on 2011. In comparison, in Birmingham 47.6% are in very good health, a 2.03% change in 2011.
- In Acocks Green, the proportion of residents aged 16 and over with no qualifications is 25.9%, a change of -0.10% since 2011. In comparison, 23.9% in Birmingham have no qualifications.

- Acocks Green Library is situated in a primarily suburban shopping area serving a range of communities in a variety of housing types.
- Acocks Green Library is situated on the ground floor. The first floor of the building is vacant.
- The building is currently owned by Birmingham City Council
- Acocks Green Library holds an estimated 2000 books on railways which can be borrowed. In addition, the Library of Birmingham keeps back runs of periodicals, photographs, postcards, tickets, maps and plans, and a collection of 5000 books.
- Acocks Green Library has the greatest number (9517) of family events than any of the other 'Tier 1' community libraries.
- Acocks Green Library holds the highest number (5058) of cultural events than any of the other 'Tier 1' community libraries.
- During the Second World War, the railings from Acocks Green Library were taken down for the war effort. A garden of remembrance and memorial have been in place at the library since the 1960s.

Aston Library	
Opening hours (per week)	14
Constituency	Aston
Ward	Ladywood
Population size (Census 2021)	24,450



Aston Library
 Ettington Rd
 Aston
 Birmingham
 B6 6ED

Stage 1

Usage (Calendar Year 2023)	Computer Usage	135	Items Issued	2,905
----------------------------	----------------	-----	--------------	-------

Stage 2

Community Need		Accessibility			
Index of Multiple Deprivation (IMD) Score (1 = most deprived 10 = least deprived)	1	Journey time by car (from library location to nearest alternative Library) - less than 20 mins	Yes	Journey time by public transport to alternative library - (from library location to nearest alternative Library) around or less than 30 mins	Yes
Travel distance to nearest alternative library	Birchfield (0.52 miles away)				
Tier	3	Number of users (membership reserve)		10,419	
Building condition & maintenance costs suitability	High	Number of new members added within the last year		294	

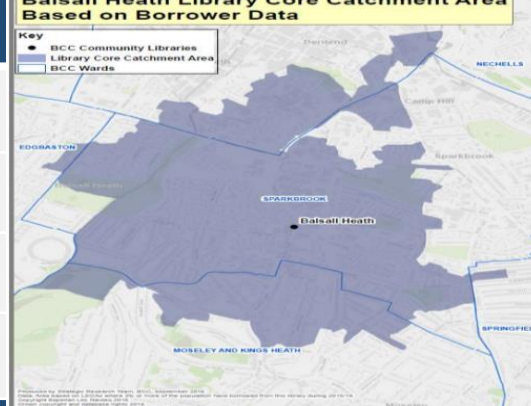
Summary of library and area information

- Aston has a rank of 14 out of 69 wards in Birmingham and is in Decile 1. Of the 69 wards, 43 wards are in the top 20% most deprived (deciles 1 and 2) in the country.
- There are 24,450 people living in Aston, 25.2% of the area population are aged 0-15 years old and 8.4% are aged 65 and over.
- The largest ethnic group in Aston is Asian, Asian British, which accounts for 69.9% of the area population.
- The largest religion within the area is Muslim, which accounts for 73.3% of the ward population. This is followed by Christian, which accounts for 13.8% of the area population.
- For Aston the proportion of all children aged 0 to 15 living in income deprived families is 31.0 and the proportion of those aged 60 or over who experience income deprivation is 55.1
- In Aston, 14.1% of the population were disabled according to the Equality Act 2010, compared to 17.3% in Birmingham.
- In Aston, 48.3% are in very good health, a 0.06% change in 2011. In comparison, in Birmingham 47.6% are in very good health, a 2.03% change in 2011.
- In Aston the proportion of residents aged 16 and over with no qualifications is 35.4%, a change of -0.00% since 2011. In comparison, 23.9% in Birmingham have no qualifications.

- Aston library is situated within Aston Fire Station on a 5-year lease.
- Aston library is the newest Library in the city and the children's Library has a glass wall so that children can observe the Fire Engine appliance bay.
- Aston library is in the top 3 libraries with the least number (71) of children's events taking place within any of the community libraries.
- Aston library is in the top 3 libraries with the least number (504) of family events taking place within any of the community libraries.
- Aston library is in the top 3 libraries with the least number (39) of cultural events taking place within any of the community libraries.

Balsall Heath Library

Opening hours (per week)	35
Constituency	Hall Green
Ward	Balsall Heath
Population size (Census 2021)	12,152



Balsall Heath Library
Moseley Road
Birmingham
B12 9BX

Stage 1

Usage (Calendar Year 2023)	Computer Usage	2,654	Items Issued	18,475
----------------------------	----------------	-------	--------------	--------

Stage 2

Community Need		Accessibility			
Index of Multiple Deprivation (IMD) Score (1 = most deprived 10 = least deprived)	1	Journey time by car (from library location to nearest alternative Library) - less than 20 mins	Yes	Journey time by public transport to alternative library - (from library location to nearest alternative Library) around or less than 30 mins	Yes
Travel distance to nearest alternative library	Sparkhill (1.09 miles away)				
Tier	1	Number of users (membership reserve)		31,771	
Building condition & maintenance costs suitability	Under refurbishment	Number of new members added within the last year		514	

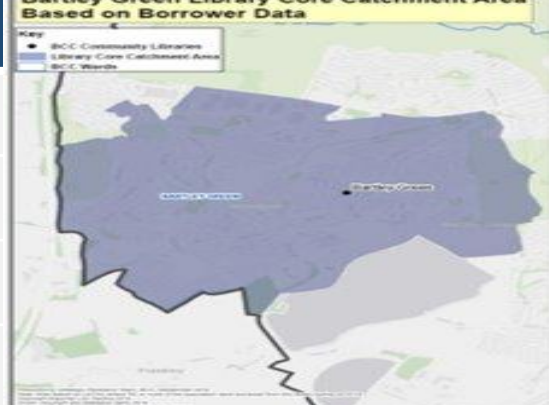
Summary of library and area information

- Balsall Heath West has a rank of 9 out of 69 wards in Birmingham and is in Decile 1. Of the 69 wards, 43 wards are in the top 20% most deprived (deciles 1 and 2) in the country.
- There are 12,152 people living in Balsall Heath West, 22.4% of the area population are aged 0-15 years old and 10.3% are aged 65 and over.
- The largest ethnic group in Balsall Heath West is Asian, Asian British, which accounts for 42.2% of the area population.
- The largest religion within the area is Muslim, which accounts for 61.9% of the ward population. This is followed by Christian, which accounts for 17.5% of the area population.
- For Balsall Heath West the proportion of all children aged 0 to 15 living in income deprived families is 36.7 and the proportion of those aged 60 or over who experience income deprivation is 56.6.
- In Balsall Heath West, 22.6% of the population were disabled according to the Equality Act 2010, compared to 17.3% in Birmingham.
- In Balsall Heath West, 46.3% are in very good health, a -0.02% change in 2011. In comparison, in Birmingham 47.6% are in very good health, a 2.03% change in 2011.
- In Balsall Heath West, the proportion of residents aged 16 and over with no qualifications is 29.2%, a change of -0.01% since 2011. In comparison, 23.9% in Birmingham have no qualifications.

- Balsall Heath Library is currently closed for refurbishment as it is part of the Moseley Road Baths Project which as a £15.5 million scheme supported by Levelling up funding.
- A coalition of organisations – Moseley Road Baths CIO, the Friends of Moseley Road Baths, Birmingham City Council, Historic England, World Monuments Fund, led by the National Trust – has developed a long-term vision to restore and reimagine these buildings so that they continue to serve local people as well as providing a new destination which will appeal to tourists.

Bartley Green Library

Opening hours (per week)	14
Constituency	Edgbaston
Ward	Bartley Green
Population size (Census 2021)	22,685



Bartley Green Library
Adams Hill
Birmingham
B32 3QG

Stage 1

Usage (Calendar Year 2023)	Computer Usage	332	Items Issued	4,156
----------------------------	----------------	-----	--------------	-------

Stage 2

Community Need		Accessibility			
Index of Multiple Deprivation (IMD) Score (1 = most deprived 10 = least deprived)	2	Journey time by car (from library location to nearest alternative Library) - less than 20 mins	Yes	Journey time by public transport to alternative library - (from library location to nearest alternative Library) around or less than 30 mins	Yes
Travel distance to nearest alternative library	Weoley Castle (1.26 miles away)				
Tier	3	Number of users (membership reserve)		8,337	
Building condition & maintenance costs suitability	Low	Number of new members added within the last year		175	

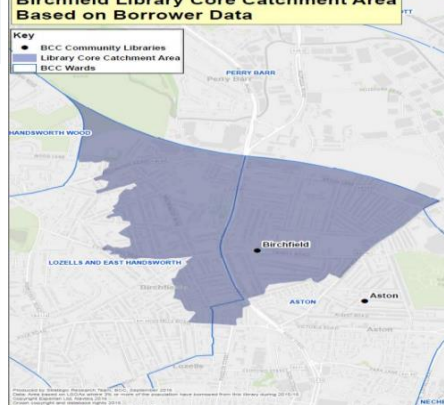
Summary of library and area information

- Bartley Green has a rank of 31 out of 69 wards in Birmingham and is in Decile 2. Of the 69 wards, 43 wards are in the top 20% most deprived (deciles 1 and 2) in the country.
- There are 22,685 people living in Bartley Green, 21.1% of the area population are aged 0-15 years old and 16.3% are aged 65 and over.
- The largest ethnic group in Bartley Green is White, which accounts for 72.4% of the area population.
- The largest religion within the area is Christian, which accounts for 47.2% of the ward population. This is followed by 'No religion', which accounts for 37.6% of the area population.
- For Bartley Green, the proportion of all children aged 0 to 15 living in income deprived families is 33.1 and the proportion of those aged 60 or over who experience income deprivation is 23.8.
- In Bartley Green, 22.6% of the population were disabled according to the Equality Act 2010, compared to 17.3% in Birmingham.
- In Bartley Green, 43.5% are in very good health, a -0.03% change in 2011. In comparison, in Birmingham 47.6% are in very good health, a 2.03% change in 2011.
- In Bartley Green, the proportion of residents aged 16 and over with no qualifications is 25.3%, a change of -0.18% since 2011. In comparison, 23.9% in Birmingham have no qualifications

- Bartley Green Library is held on charitable trust by Birmingham City Council and the trust deed restricts the use of the building to a library only.
- Bartley Green library holds the greatest number of cultural events (679) than any other Tier 3 Community Libraries.
- Bartley Green library holds the greatest number of children's events (1984) than any other Tier 3 Community Libraries.
- Bartley Green library holds the greatest number of family events (2983) than any other Tier 3 Community Libraries.

Birchfield Library

Opening hours (per week)	21
Constituency	Aston
Ward	Ladywood
Population size (Census 2021)	24,450



Birchfield Library
Trinity Road
Birmingham
B6 6AH

Stage 1

Usage (Calendar Year 2023)	Computer Usage	1,031	Items Issued	17,753
----------------------------	----------------	-------	--------------	--------

Stage 2

Community Need		Accessibility			
Index of Multiple Deprivation (IMD) Score (1 = most deprived 10 = least deprived)	1	Journey time by car (from library location to nearest alternative Library) - less than 20 mins	Yes	Journey time by public transport to alternative library - (from library location to nearest alternative Library) around or less than 30 mins	Yes
Travel distance to nearest alternative library	Aston Library (784 yards away)				
Tier	2	Number of users (membership reserve)		29,348	
Building condition & maintenance costs suitability	Medium	Number of new members added within the last year		547	

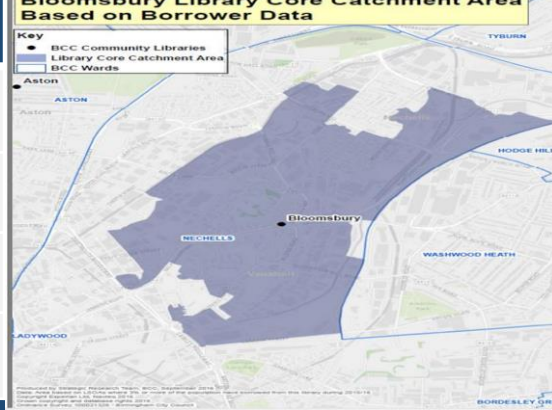
Summary of library and area information

- Aston has a rank of 14 out of 69 wards in Birmingham and is in Decile 1. Of the 69 wards, 43 wards are in the top 20% most deprived (deciles 1 and 2) in the country.
- There are 24,450 people living in Aston, 25.2% of the area population are aged 0-15 years old and 8.4% are aged 65 and over.
- The largest ethnic group in Aston is Asian, Asian British, which accounts for 69.9% of the area population.
- The largest religion within the area is Muslim, which accounts for 73.3% of the ward population. This is followed by Christian, which accounts for 13.8% of the area population.
- For Aston the proportion of all children aged 0 to 15 living in income deprived families is 31.0 and the proportion of those aged 60 or over who experience income deprivation is 55.1
- In Aston, 14.1% of the population were disabled according to the Equality Act 2010, compared to 17.3% in Birmingham.
- In Aston, 48.3% are in very good health, a 0.06% change in 2011. In comparison, in Birmingham 47.6% are in very good health, a 2.03% change in 2011.
- In Aston the proportion of residents aged 16 and over with no qualifications is 35.4%, a change of -0.00% since 2011. In comparison, 23.9% in Birmingham have no qualifications.

- Birchfield Library is located on the ground floor of a three-storey building.
- Birchfield Library holds the third highest number (5170) of family events than any of the other community library.

Bloomsbury Library

Opening hours (per week)	14
Constituency	Nechells
Ward	Ladywood
Population size (Census 2021)	16,142



Bloomsbury Library at The POD
 Oliver Street
 Birmingham
 B7 4NX

Stage 1

Usage (Calendar Year 2023)	Computer Usage	No data available	Items Issued	4,331
----------------------------	----------------	-------------------	--------------	-------

Stage 2

Community Need		Accessibility			
Index of Multiple Deprivation (IMD) Score (1 = most deprived 10 = least deprived)	1	Journey time by car (from library location to nearest alternative Library) - less than 20 mins	Yes	Journey time by public transport to alternative library - (from library location to nearest alternative Library) around or less than 30 mins	Yes
Travel distance to nearest alternative library	Aston Library (1.08 miles away)				
Tier	3	Number of users (membership reserve)		8,364	
Building condition & maintenance costs suitability	Not a Birmingham City Council building	Number of new members added within the last year		116	

Summary of library and area information

- Necells has a rank of 24 out of 69 wards in Birmingham and is in Decile 1. Of the 69 wards, 43 wards are in the top 20% most deprived (deciles 1 and 2) in the country.
- There are 16,142 people living in Necells, 21.5% of the area population are aged 0-15 years old and 6.0% are aged 65 and over.
- The largest ethnic group in Necells is Black African, Caribbean, Black British, which accounts for 36.4% of the area population.
- The largest religion within the area is Muslim, which accounts for 40.3% of the ward population. This is followed by Christian, which accounts for 26.3% of the area population.
- For Necells the proportion of all children aged 0 to 15 living in income deprived families is 38.3 and the proportion of those aged 60 or over who experience income deprivation is 51.2
- In Necells, 13.8% of the population were disabled according to the Equality Act 2010, compared to 17.3% in Birmingham.
- In Necells,, 53.1% are in very good health, a 0.11% change on 2011. In comparison, in Birmingham 47.6% are in very good health, a 2.03% change in 2011.
- In Necells, the proportion of residents aged 16 and over with no qualifications is 20.9%, a change of -0.05% since 2011. In comparison, 23.9% in Birmingham have no qualifications.

- The Bloomsbury Library is located in Nechells POD and is offered in partnership with Nechells Shine.
- Bloomsbury Library has Nechells POD.

Boldmere Library		Based on Borrower Data			Boldmere Library 119 Boldmere Road Birmingham B73 5TU
Opening hours (per week)	21				
Constituency	Sutton Coldfield				
Ward	Sutton Vesey				
Population size (Census 2021)	20,112				

Stage 1					
Usage (Calendar Year 2023)	Computer Usage	494	Items Issued	23,307	

Stage 2					
Community Need		Accessibility			
Index of Multiple Deprivation (IMD) Score (1 = most deprived 10 = least deprived)	7	Journey time by car (from library location to nearest alternative Library) - less than 20 mins	Yes	Journey time by public transport to alternative library - (from library location to nearest alternative Library) around or less than 30 mins	Yes
Travel distance to nearest alternative library	Sutton Coldfield (1.28 miles away)				
Tier	2	Number of users (membership reserve)	35,873		
Building condition & maintenance costs suitability	High	Number of new members added within the last year	406		

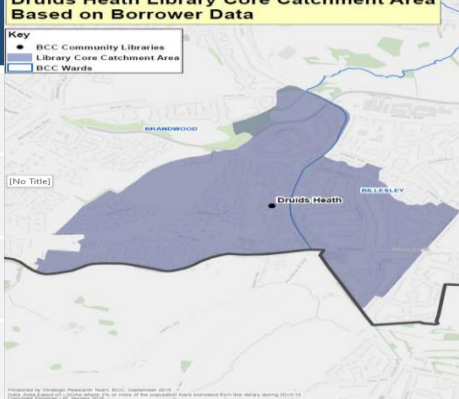
Summary of library and area information

- Sutton Vesey has a rank of 65 out of 69 wards in Birmingham and is in Decile 7. Of the 69 wards, 43 wards are in the top 20% most deprived (deciles 1 and 2) in the country.
- There are 20,112 people living in Sutton Vesey, 16.8% of the area population are aged 0-15 years old and 22.4% are aged 65 and over.
- The largest ethnic group in Sutton Vesey is White, which accounts for 79.7% of the area population.
- The largest religion within the area is Christian, which accounts for 51.3% of the ward population. This is followed by No religion, which accounts for 31.2% of the area population.
- For Sutton Vesey, the proportion of all children aged 0 to 15 living in income deprived families is 6.7 and the proportion of those aged 60 or over who experience income deprivation is 10.7.
- In Sutton Vesey, 16.1% of the population were disabled according to the Equality Act 2010, compared to 17.3% in Birmingham.
- In Sutton Vesey, 50.7% are in very good health, a -0.02% change in 2011. In comparison, in Birmingham 47.6% are in very good health, a 2.03% change in 2011.
- In Sutton Vesey, the proportion of residents aged 16 and over with no qualifications is 14.6%, a change of -0.11% since 2011. In comparison, 23.9% in Birmingham have no qualifications

- Boldmere Library is supported by funding from Sutton Coldfield Charitable Trusts.
- Boldmere Library holds the third highest number (720) of family events than any of the other 'Tier 2' community library.

Druids Heath Library

Opening hours (per week)	21
Constituency	Selly Oak
Ward	Druids Heath
Population size (Census 2021)	11,644



Druids Heath Library
 Idmiston Croft
 Birmingham
 B14 5NJ

Stage 1

Usage (Calendar Year 2023)	Computer Usage	749	Items Issued	11,409
----------------------------	----------------	-----	--------------	--------

Stage 2

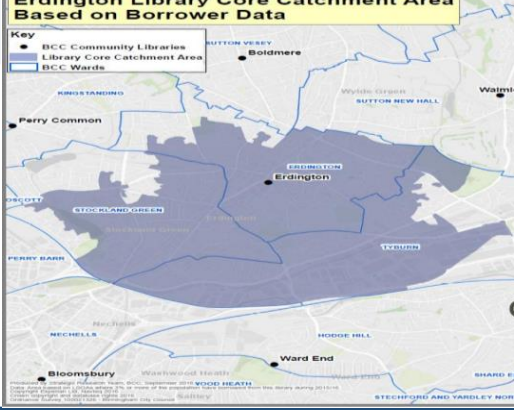
Community Need		Accessibility			
Index of Multiple Deprivation (IMD) Score (1 = most deprived 10 = least deprived)	1	Journey time by car (from library location to nearest alternative Library) - less than 20 mins	Yes	Journey time by public transport to alternative library - (from library location to nearest alternative Library) around or less than 30 mins	Yes
Travel distance to nearest alternative library	Yardley Wood (1.45 miles away)				
Tier	2	Number of users (membership reserve)		19,690	
Building condition & maintenance costs suitability	Medium	Number of new members added within the last year		338	

Summary of library and area information

- Druids Heath has a rank of 25 out of 69 wards in Birmingham and is in Decile 1. Of the 69 wards, 43 wards are in the top 20% most deprived (deciles 1 and 2) in the country.
- There are 11,644 people living in Druids Heath, 21.0% of the area population are aged 0-15 years old and 15.1% are aged 65 and over.
- The largest ethnic group in Druids Heath is White, which accounts for 72.5% of the area population.
- The largest religion within the area is Christian, which accounts for 45.2% of the ward population. This is followed by No religion, which accounts for 36.2% of the area population.
- For Druids Heath the proportion of all children aged 0 to 15 living in income deprived families is 35.0 and the proportion of those aged 60 or over who experience income deprivation is 28.3
- In Druids Heath, 22.6% of the population were disabled according to the Equality Act 2010, compared to 17.3% in Birmingham.
- In Druids Heath, 21.7% are in very good health, a -0.02% change on 2011. In comparison, in Birmingham 47.6% are in very good health, a 2.03% change in 2011.
- In Druids Heath, the proportion of residents aged 16 and over with no qualifications is 24.8%, a change of 0.01% since 2011. In comparison, 23.9% in Birmingham have no qualifications.

- Druids Heath Library has the greatest number (2775) of family events than any of the other 'Tier 2' community libraries.
- Druids Heath Library holds the highest number (2775) of family events than any of the other 'Tier 2' community library.

Erdington Library	
Opening hours (per week)	35
Constituency	Erdington
Ward	Erdington
Population size (Census 2021)	21,549



Erdington Library
Orphanage Road
Birmingham
B24 9HP

Stage 1				
Usage (Calendar Year 2023)	Computer Usage	4,639	Items Issued	34,379

Stage 2						
Community Need			Accessibility			
Index of Multiple Deprivation (IMD) Score (1 = most deprived 10 = least deprived)	3		Journey time by car (from library location to nearest alternative Library) - less than 20 mins	Yes	Journey time by public transport to alternative library - (from library location to nearest alternative Library) around or less than 30 mins	Yes
Travel distance to nearest alternative library	Boldmere (1.46 miles away)					
Tier	1		Number of users (membership reserve)	59,986		
Building condition & maintenance costs suitability	Low		Number of new members added within the last year	1,261		

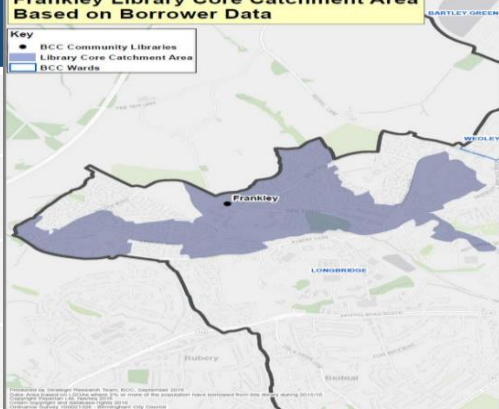
Summary of library and area information

- Erdington has a rank of 38 out of 69 wards in Birmingham and is in Decile 3. Of the 69 wards, 43 wards are in the top 20% most deprived (deciles 1 and 2) in the country.
- There are 21,549 people living in Erdington, 19.9% of the area population are aged 0-15 years old and 15.9% are aged 65 and over.
- The largest ethnic group in Erdington is White, which accounts for 65.9% of the area population.
- The largest religion within the area is Christian, which accounts for 48.9% of the ward population. This is followed by No religion, which accounts for 29.8% of the area population.
- For Erdington the proportion of all children aged 0 to 15 living in income deprived families is 28.10 and the proportion of those aged 60 or over who experience income deprivation is 19.3
- In Erdington, 19.5% of the population were disabled according to the Equality Act 2010, compared to 17.3% in Birmingham.
- In Erdington, 46.6% are in very good health, a 0.11% change on 2011. In comparison, in Birmingham 47.6% are in very good health, a 2.03% change in 2011.
- In Erdington, the proportion of residents aged 16 and over with no qualifications is 22.8%, a change of -0.4% since 2011. In comparison, 23.9% in Birmingham have no qualifications.

- Erdington Library required £1.5 million to be spent on a new roof.
- Erdington Library is a Grade II Listed building.
- Erdington library is in the top 3 libraries with the least number (637) of family events than any of the other 'Tier 1' community libraries.
- Erdington library is in the top 3 libraries with the least number (637) of children's events than any of the other 'Tier 1' community libraries.

Frankley Library

Opening hours (per week)	21
Constituency	Northfield
Ward	Frankley Great Park
Population size (Census 2021)	12,654



Frankley Library
 Balaam Wood Academy
 Birmingham
 B45 0EU

Stage 1

Usage (Calendar Year 2023)	Computer Usage	435	Items Issued	34,379
----------------------------	----------------	-----	--------------	--------

Stage 2

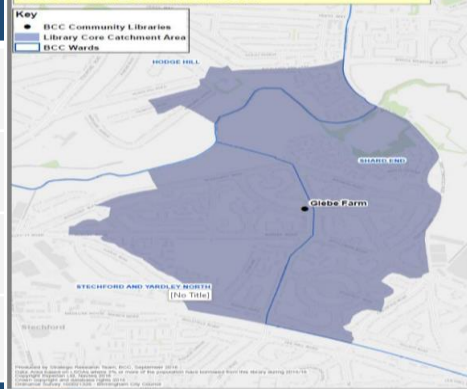
Community Need		Accessibility			
Index of Multiple Deprivation (IMD) Score (1 = most deprived 10 = least deprived)	1	Journey time by car (from library location to nearest alternative Library) - less than 20 mins	Yes	Journey time by public transport to alternative library - (from library location to nearest alternative Library) around or less than 30 mins	Yes
Travel distance to nearest alternative library	Northfield (2.21 miles away)				
Tier	2	Number of users (membership reserve)		9,636	
Building condition & maintenance costs suitability	Not a BCC building	Number of new members added within the last year		171	

Summary of library and area information

- Frankley Great Park has a rank of 22 out of 69 wards in Birmingham and is in Decile 1. Of the 69 wards, 43 wards are in the top 20% most deprived (deciles 1 and 2) in the country
- There are 12,654 people living in Frankley Great Park, 21.6% of the area population are aged 0-15 years old and 14.7% are aged 65 and over.
- The largest ethnic group in Frankley Great Park is White, which accounts for 79.3% of the area population.
- The largest religion within the area is No religion, which accounts for 45.4% of the ward population. This is followed by Christian, which accounts for 43.1% of the area population.
- For Frankley Great Park the proportion of all children aged 0 to 15 living in income deprived families is 36.2 and the proportion of those aged 60 or over who experience income deprivation is 29.1
- In Frankley Great Park, 23.5% of the population were disabled according to the Equality Act 2010, compared to 17.3% in Birmingham.
- In Frankley Great Park, 44.5% are in very good health, a 0.06% change on 2011. In comparison, in Birmingham 47.6% are in very good health, a 2.03% change in 2011.
- In Frankley Great Park, the proportion of residents aged 16 and over with no qualifications is 26.7%, a change of -0.07% since 2011. In comparison, 23.9% in Birmingham have no qualifications.

- Frankley Library within the grounds of Balaam Wood school. This means that the library cannot always be guaranteed to open during weekends of school holidays.
- Frankley Library is in the top 3 libraries with the greatest number (1504) of children's events taking place within 'Tier 2' community libraries.

Opening hours (per week)	21
Constituency	Yardley
Ward	Glebe Farm & Tile Cross
Population size (Census 2021)	24,545



Glebe Farm Library
 Glebe Farm Road
 Birmingham
 B33 9NA

Stage 1

Usage (Calendar Year 2023)	Computer Usage	358	Items Issued	6,244
----------------------------	----------------	-----	--------------	-------

Stage 2

Community Need		Accessibility			
Index of Multiple Deprivation (IMD) Score (1 = most deprived 10 = least deprived)	1	Journey time by car (from library location to nearest alternative Library) - less than 20 mins	Yes	Journey time by public transport to alternative library - (from library location to nearest alternative Library) around or less than 30 mins	Yes
Travel distance to nearest alternative library	Shard End (0.84 miles away)				
Tier	2/3	Number of users (membership reserve)		11,362	
Building condition & maintenance costs suitability	High	Number of new members added within the last year		254	

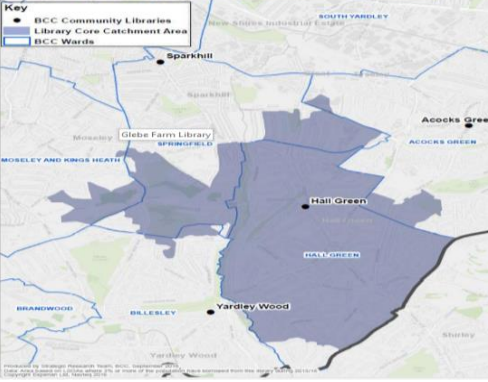
Summary of library and area information

- | | |
|--|--|
| <ul style="list-style-type: none"> Glebe Farm & Tile Cross has a rank of 15 out of 69 wards in Birmingham and is in Decile 1. Of the 69 wards, 43 wards are in the top 20% most deprived (deciles 1 and 2) in the country. There are 24,545 people living in Glebe Farm & Tile Cross, 25.6% of the area population are aged 0-15 years old and 11.7% are aged 65 and over. The largest ethnic group in Glebe Farm & Tile Cross is White, which accounts for 51.7% of the area population. The largest religion within the area is Christian, which accounts for 35.1% of the ward population. This is followed by Muslim, which accounts for 32.2% of the area population. For Glebe Farm & Tile Cross the proportion of all children aged 0 to 15 living in income deprived families is 35.8 and the proportion of those aged 60 or over who experience income deprivation is 29.3 In Glebe Farm & Tile Cross, 19.6% of the population were disabled according to the Equality Act 2010, compared to 17.3% in Birmingham. In Glebe Farm & Tile Cross, 44% are in very good health, a 0.04% change on 2011. In comparison, in Birmingham 47.6% are in very good health, a 2.03% change in 2011. In Glebe Farm & Tile Cross, the proportion of residents aged 16 and over with no qualifications is 30.3%, a change of -0.19% since 2011. In comparison, 23.9% in Birmingham have no qualifications | <ul style="list-style-type: none"> Successful partnership with Welcome change has seen the library deliver additional services and open for 7 days per week. Glebe Farm Library was opened on 22nd April 1952. In her book Stechford, Ward End and Glebe Farm, Marian Baxter says 'Glebe Farm Library was my very first introduction to libraries as a young child, and it was my experiences at this library that convinced me at an early age that I wanted to become a librarian'. The library underwent a major modernisation and refurbishment in 2003. |
|--|--|

Hall Green Library

Opening hours (per week)	35
Constituency	Hall Green
Ward	Hall Green North
Population size (Census 2021)	24,563

Hall Green Library Core Catchment Area Based on Borrower Data



Hall Green Library
 221 Stratford Road
 Birmingham
 B28 9AD

Stage 1

Usage (Calendar Year 2023)	Computer Usage	1,889	Items Issued	40,614
----------------------------	----------------	-------	--------------	--------

Stage 2

Community Need		Accessibility			
Index of Multiple Deprivation (IMD) Score (1 = most deprived 10 = least deprived)	3	Journey time by car (from library location to nearest alternative Library) - less than 20 mins	Yes	Journey time by public transport to alternative library - (from library location to nearest alternative Library) around or less than 30 mins	Yes
Travel distance to nearest alternative library	Yardley (1.2 miles away)				
Tier	1	Number of users (membership reserve)		58,722	
Building condition & maintenance costs suitability	Low	Number of new members added within the last year		755	

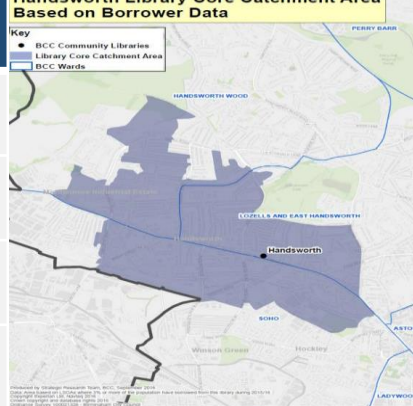
Summary of library and area information

- Hall Green North has a rank of 50 out of 69 wards in Birmingham and is in Decile 3. Of the 69 wards, 43 wards are in the top 20% most deprived (deciles 1 and 2) in the country.
- There are 24,563 people living in Hall Green North, 23.1% of the area population are aged 0-15 years old and 12.7% are aged 65 and over.
- The largest ethnic group in Hall Green North is Asian, Asian British,, which accounts for 59.5% of the area population.
- The largest religion within the area is Muslim, which accounts for 53.2% of the ward population. This is followed by Christian, which accounts for 20.5% of the area population.
- For Hall Green North the proportion of all children aged 0 to 15 living in income deprived families is 20.0 and the proportion of those aged 60 or over who experience income deprivation is 23.7
- In Hall Green North, 47.6% are in very good health, a 0.02% change on 2011. In comparison, in Birmingham 47.6% are in very good health, a 2.03% change in 2011.
- In Hall Green North, the proportion of residents aged 16 and over with no qualifications is 22.8%, a change of -0.3% since 2011. In comparison, 23.9% in Birmingham have no qualifications

- Hall Green Library is well located on a main road near shops and Hall Green College in a popular suburban area.

Handsworth Library

Opening hours (per week)	35
Constituency	Handsworth
Ward	Perry Barr
Population size (Census 2021)	11,807



Handsworth Library
Soho Road
Birmingham
B21 9DP

Stage 1

Usage (Calendar Year 2023)	Computer Usage	4,463	Items Issued	15,220
----------------------------	----------------	-------	--------------	--------

Stage 2

Community Need		Accessibility			
Index of Multiple Deprivation (IMD) Score (1 = most deprived 10 = least deprived)	1	Journey time by car (from library location to nearest alternative Library) - less than 20 mins	Yes	Journey time by public transport to alternative library - (from library location to nearest alternative Library) around or less than 30 mins	Yes
Travel distance to nearest alternative library	Birchfield (1.24 miles away)				
Tier	1	Number of users (membership reserve)		35,450	
Building condition & maintenance costs suitability	Medium	Number of new members added within the last year		1,044	

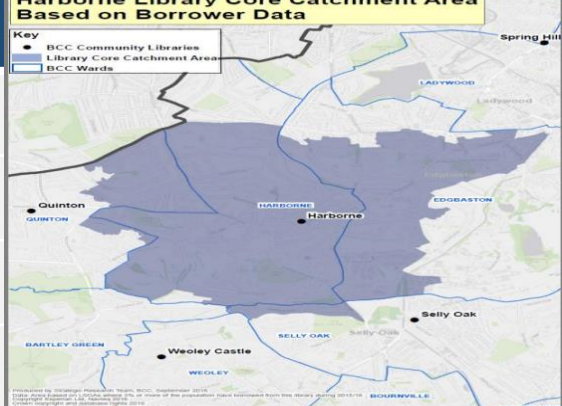
Summary of library and area information

- Handsworth has a rank of 16 out of 69 wards in Birmingham and is in Decile 1. Of the 69 wards, 43 wards are in the top 20% most deprived (deciles 1 and 2) in the country.
- There are 11,807 people living in Handsworth, 22.3% of the area population are aged 0-15 years old and 10.0% are aged 65 and over.
- The largest ethnic group in Handsworth is Asian, Asian British, which accounts for 63.0% of the area population.
- The largest religion within the area is Muslim, which accounts for 44.4% of the ward population. This is followed by Christian, which accounts for 18.8% of the area population.
- For Handsworth, the proportion of all children aged 0 to 15 living in income deprived families is 32.2 and the proportion of those aged 60 or over who experience income deprivation is 49.9
- In Handsworth, 15.1% of the population were disabled according to the Equality Act 2010, compared to 17.3% in Birmingham.
- In Handsworth, 45.8% are in very good health, a -0.01% change on 2011. In comparison, in Birmingham 47.6% are in very good health, a 2.03% change in 2011.
- In Handsworth, the proportion of residents aged 16 and over with no qualifications is 34.5%, a change of -0.02% since 2011. In comparison, 23.9% in Birmingham have no qualifications

- Handsworth Library is a busy inner-city library on busy main road near shops and adjoining Handsworth College.
- Handsworth Library is a Grade II listed building.
- Handsworth is in the top 3 libraries with the least number (599) of family events than any of the other 'Tier 1' community libraries.
- Handsworth Library, on the Soho Road, was opened on 1 May 1880. There were books to borrow, and newspapers in the Reading Room. The first Annual Report in 1881 stated that the Committee: "had the pleasure of congratulating the Local Board and the inhabitants of the District on the great success which has attended the adoption of the Public Libraries' Acts in Handsworth.
- 28,810 volumes had been issued in the first year. In July 1882 music books were added to the stock; the 1887 Report affirming that "our Music Library is acknowledged to be of special and almost unique excellence amongst Free Public Libraries."

Harborne Library

Opening hours (per week)	35
Constituency	Edgbaston
Ward	Harborne
Population size (Census 2021)	22,979



Harborne Library
High Street
Birmingham
B17 9QG

Stage 1

Usage (Calendar Year 2023)	Computer Usage	3,110	Items Issued	59,774
----------------------------	----------------	-------	--------------	--------

Stage 2

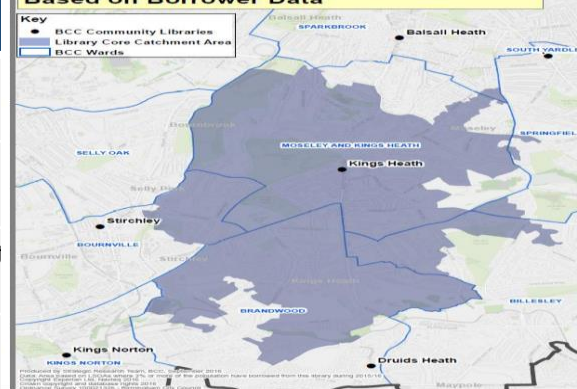
Community Need		Accessibility			
Index of Multiple Deprivation (IMD) Score (1 = most deprived 10 = least deprived)	3	Journey time by car (from library location to nearest alternative Library) - less than 20 mins	Yes	Journey time by public transport to alternative library - (from library location to nearest alternative Library) around or less than 30 mins	Yes
Travel distance to nearest alternative library	Selly Oak (1.32 miles away)				
Tier	1	Number of users (membership reserve)		59,774	
Building condition & maintenance costs suitability	Low	Number of new members added within the last year		1,247	

Summary of library and area information

- Harborne has a rank of 55 out of 69 wards in Birmingham and is in Decile 3. Of the 69 wards, 43 wards are in the top 20% most deprived (deciles 1 and 2) in the country.
 - There are 22,979 people living in Harborne, 18.9% of the area population are aged 0-15 years old and 16.0% are aged 65 and over.
 - The largest ethnic group in Harborne is White, which accounts for 60.9% of the area population.
 - The largest religion within the area is Christian, which accounts for 42.4% of the ward population. This is followed by No religion, which accounts for 31.2% of the area population.
 - For Harborne the proportion of all children aged 0 to 15 living in income deprived families is 21.3 and the proportion of those aged 60 or over who experience income deprivation is 18.89
 - In Harborne, 53.2% are in very good health, a 0.01% change on 2011. In comparison, in Birmingham 47.6% are in very good health, a 2.03% change in 2011.
 - In Harborne, 16.0% of the population were disabled according to the Equality Act 2010, compared to 17.3% in Birmingham
 - In Harborne, the proportion of residents aged 16 and over with no qualifications is 15.1%, a change of -0.08% since 2011. In comparison, 23.9% in Birmingham have no qualifications
- Harborne Library has significant egress issues to be resolved and maintenance required.
 - During the Second World War the basement became an air-raid shelter, and until blackout provision could be made the library closed at sunset.
 - The library closed in the autumn of 2005 for a major refurbishment which included the installation of a public lift, disabled person's toilet and baby changing facilities. The library opened again on 10 July 2006 with bright and attractive new furniture and fittings. The opening hours have been increased and a new music CD loan service has been introduced.

Kings Heath Library

Opening hours (per week)	35
Constituency	Hall Green
Ward	Brandwood and King's Heath
Population size (Census 2021)	18,778



Kings Heath Library
 High Street
 Birmingham
 B14 7SW

Stage 1

Usage (Calendar Year 2023)	Computer Usage	3,110	Items Issued	31,755
----------------------------	----------------	-------	--------------	--------

Stage 2

Community Need		Accessibility			
Index of Multiple Deprivation (IMD) Score (1 = most deprived 10 = least deprived)	3	Journey time by car (from library location to nearest alternative Library) - less than 20 mins	Yes	Journey time by public transport to alternative library - (from library location to nearest alternative Library) around or less than 30 mins	Yes
Travel distance to nearest alternative library	Balsall Heath (1.39 miles away)				
Tier	1	Number of users (membership reserve)		87,068	
Building condition & maintenance costs suitability	Medium	Number of new members added within the last year		1,174	

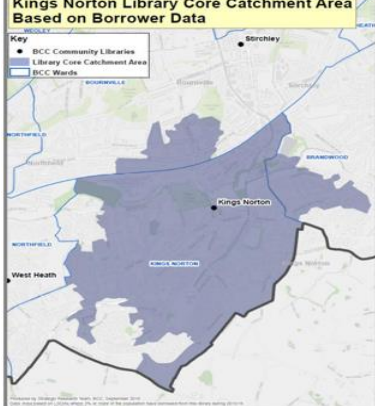
Summary of library and area information

- Brandwood & King's Heath has a rank of 53 out of 69 wards in Birmingham and is in Decile 3. Of the 69 wards, 43 wards are in the top 20% most deprived (deciles 1 and 2) in the country.
- There are 18,778 people living in Brandwood & King's Heath, 18.8% of the area population are aged 0-15 years old and 16.3% are aged 65 and over.
- The largest ethnic group in Brandwood & King's Heath is White, which accounts for 65.9% of the area population.
- The largest religion within the area is No religion, which accounts for 37.3% of the ward population. This is followed by Christian, which accounts for 35.2% of the area population.
- For Brandwood & King's Heath the proportion of all children aged 0 to 15 living in income deprived families is 20.0 and the proportion of those aged 60 or over who experience income deprivation is 19.9
- In Brandwood & King's Heath, 49.0% are in very good health, a -0.03% change on 2011. In comparison, in Birmingham 47.6% are in very good health, a 2.03% change in 2011
- In Brandwood & King's Heath, **18.1%** of the population were disabled according to the Equality Act 2010, compared to 17.3% in Birmingham.
- In Brandwood & King's Heath, the proportion of residents aged 16 and over with no qualifications is 17.0%, a change of --0.10% since 2011. In comparison, 23.9% in Birmingham have no qualifications.

- Kings Heath Library is well located on a busy High Street in a popular suburban area serving a wide catchment area.
- Kingsheath Library was extended in 1983 to provide children's library provision.
- A new counter has recently been installed into Kingsheath Library through the self-service project.
- Kings Heath library was built in 1905 at the cost of £3000. It is one of ten Carnegie-funded libraries built in Birmingham between 1903 and 1909.
- The library has a collection of photographs, maps, news cuttings, and a selection of books about Birmingham and the surrounding area, including digital images of old Kings Heath and Moseley.

Kings Norton Library

Opening hours (per week)	35
Constituency	Northfield
Ward	Kings Norton North
Population size (Census 2021)	11,623



Kings Norton Library
 Pershore Road South
 Birmingham
 B30 3EU

Stage 1

Usage (Calendar Year 2023)	Computer Usage	2,128	Items Issued	30,921
----------------------------	----------------	-------	--------------	--------

Stage 2

Community Need		Accessibility			
Index of Multiple Deprivation (IMD) Score (1 = most deprived 10 = least deprived)	2	Journey time by car (from library location to nearest alternative Library) - less than 20 mins	Yes	Journey time by public transport to alternative library - (from library location to nearest alternative Library) around or less than 30 mins	Yes
Travel distance to nearest alternative library	Stirchley (1.34 miles away)				
Tier	1	Number of users (membership reserve)		45,310	
Building condition & maintenance costs suitability	Low	Number of new members added within the last year		527	

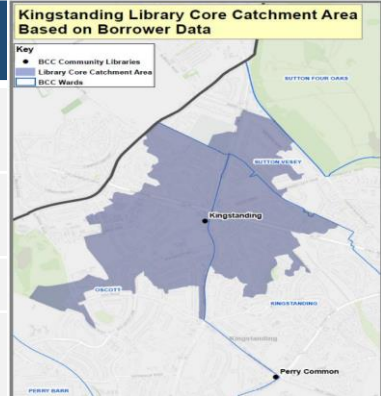
Summary of library and area information

- Kings Norton North has a rank of 44 out of 69 wards in Birmingham and is in Decile 2. Of the 69 wards, 43 wards are in the top 20% most deprived (deciles 1 and 2) in the country.
- There are 11,623 people living in Kings Norton North, 19.1% of the area population are aged 0-15 years old and 18.9% are aged 65 and over.
- The largest ethnic group in Kings Norton North is White, which accounts for 79.5% of the area population.
- The largest religion within the area is Christian, which accounts for 48.8% of the ward population. This is followed by No religion, which accounts for 37.5% of the area population.
- For Kings Norton North the proportion of all children aged 0 to 15 living in income deprived families is 26.1 and the proportion of those aged 60 or over who experience income deprivation is 16.9
- In Kings Norton North 20.2% of the population were disabled according to the Equality Act 2010, compared to 17.3% in Birmingham.
- In Kings Norton North, 45.6% are in very good health, a 2.03% change on 2011. In comparison, in Birmingham 47.6% are in very good health, a 2.03% change in 2011.
- In Kings Norton North, the proportion of residents aged 16 and over with no qualifications is 21.1%, a change of -0.08% since 2011. In comparison, 23.9% in Birmingham have no qualifications

- Located on main route into the city between communities at Kings Norton & Cotteridge.
- Very limited parking on road.

Kingstanding Library

Opening hours (per week)	21
Constituency	Perry Barr
Ward	Oscott
Population size (Census 2021)	21,171



Kingstanding Library
 Kingstanding Road
 Birmingham
 B44 9ST

Stage 1

Usage (Calendar Year 2023)	Computer Usage	881	Items Issued	11,778
----------------------------	----------------	-----	--------------	--------

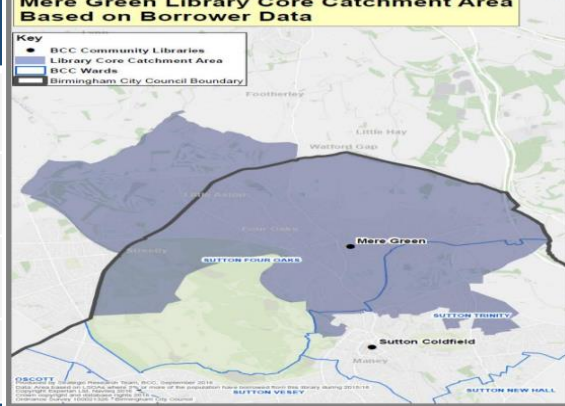
Stage 2

Community Need		Accessibility			
Index of Multiple Deprivation (IMD) Score (1 = most deprived 10 = least deprived)	3	Journey time by car (from library location to nearest alternative Library) - less than 20 mins	Yes	Journey time by public transport to alternative library - (from library location to nearest alternative Library) around or less than 30 mins	Yes
Travel distance to nearest alternative library	Perry Common (1.2 miles away)				
Tier	2	Number of users (membership reserve)		21,701	
Building condition & maintenance costs suitability	High	Number of new members added within the last year		454	

Summary of library and area information

- Oscott has a rank of 52 out of 69 wards in Birmingham and is in Decile 3. Of the 69 wards, 43 wards are in the top 20% most deprived (deciles 1 and 2) in the country.
- There are 21,171 people living in Oscott, 21.8% of the area population are aged 0-15 years old and 13.7% are aged 65 and over.
- The largest ethnic group in Oscott is White, which accounts for 70.4% of the area population.
- For Oscott the proportion of all children aged 0 to 15 living in income deprived families is 21.0 and the proportion of those aged 60 or over who experience income deprivation is 19.5.
- In Oscott, 17.6% of the population were disabled according to the Equality Act 2010, compared to 17.3% in Birmingham.
- In Oscott, 46.1% are in very good health, a -0.03% change on 2011. In comparison, in Birmingham 47.6% are in very good health, a 2.03% change in 2011.
- In Oscott, the proportion of residents aged 16 and over with no qualifications is 23.9%, a change of -0.16% since 2011. In comparison, 23.9% in Birmingham have no qualifications.

Mere Green Library	
Opening hours (per week)	35
Constituency	Sutton Coldfield
Ward	Sutton Mere Green
Population size (Census 2021)	10,140



Mere Green Library
 30A Mere Green Road
 Birmingham
 B75 5BT

Stage 1

Usage (Calendar Year 2023)	Computer Usage	1,486	Items Issued	62,991
----------------------------	----------------	-------	--------------	--------

Stage 2

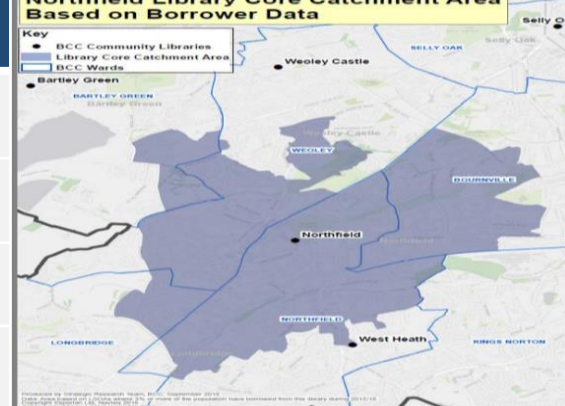
Community Need		Accessibility			
Index of Multiple Deprivation (IMD) Score (1 = most deprived 10 = least deprived)	7	Journey time by car (from library location to nearest alternative Library) - less than 20 mins	Yes	Journey time by public transport to alternative library - (from library location to nearest alternative Library) around or less than 30 mins	Yes
Travel distance to nearest alternative library	Sutton Coldfield (1.73 miles away)				
Tier	1	Number of users (membership reserve)		90,862	
Building condition & maintenance costs suitability	High	Number of new members added within the last year		889	

Summary of library and area information

<ul style="list-style-type: none"> Sutton Mere Green has a rank of 66 out of 69 wards in Birmingham and is in Decile 7. Of the 69 wards, 43 wards are in the top 20% most deprived (deciles 1 and 2) in the country. There are 10,140 people living in Sutton Mere Green, 18.4% of the area population are aged 0-15 years old and 24.2% are aged 65 and over. The largest ethnic group in Sutton Mere Green is White, which accounts for 81.1% of the area population. The largest religion within the area is Christian, which accounts for 51.2% of the ward population. This is followed by No religion, which accounts for 31.8% of the area population. For Sutton Mere Green the proportion of all children aged 0 to 15 living in income deprived families is 9.4 and the proportion of those aged 60 or over who experience income deprivation is 9.0. In Sutton Mere Green, 15.6% of the population were disabled according to the Equality Act 2010, compared to 17.3% in Birmingham. In Sutton Mere Green, 52.0% are in very good health, a 2.03% change on 2011. In comparison, in Birmingham 47.6% are in very good health, a 2.03% change in 2011. In Sutton Mere Green, the proportion of residents aged 16 and over with no qualifications is 13.6%, a change of -0.05% since 2011. In comparison, 23.9% in Birmingham have no qualifications 	<ul style="list-style-type: none"> Sutton Mere Green Library is very busy library on first floor of Community Centre within a busy shopping centre. Sutton Mere Green is supported by funding from Sutton Coldfield Charitable Trusts
--	---

Northfield Library

Opening hours (per week)	35
Constituency	Northfield
Ward	Northfield
Population size (Census 2021)	10,393



Northfield Library
77 Church Road
Birmingham
B31 2LB

Stage 1

Usage (Calendar Year 2023)	Computer Usage	2,759	Items Issued	40,618
----------------------------	----------------	-------	--------------	--------

Stage 2

Community Need		Accessibility			
Index of Multiple Deprivation (IMD) Score (1 = most deprived 10 = least deprived)	4	Journey time by car (from library location to nearest alternative Library) - less than 20 mins	Yes	Journey time by public transport to alternative library - (from library location to nearest alternative Library) around or less than 30 mins	Yes
Travel distance to nearest alternative library	Weoley Castle (1.61 miles away)				
Tier	1	Number of users (membership reserve)	66,398		
Building condition & maintenance costs suitability	Low	Number of new members added within the last year	1,045		

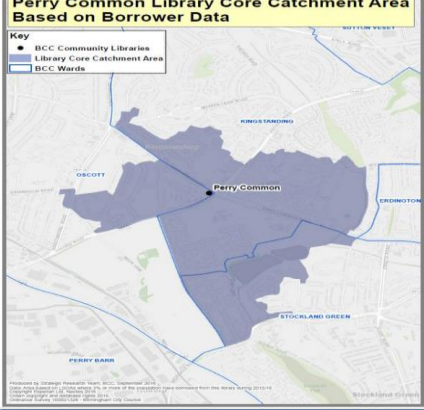
Summary of library and area information

- Northfield has a rank of 59 out of 69 wards in Birmingham and is in Decile 4. Of the 69 wards, 43 wards are in the top 20% most deprived (deciles 1 and 2) in the country.
- There are 10,393 people living in Northfield, 16.9% of the area population are aged 0-15 years old and 19.6% are aged 65 and over.
- The largest ethnic group in Northfield is White, which accounts for 83.5% of the area population.
- The largest religion within the area is Christian, which accounts for 53.3% of the ward population. This is followed by No religion, which accounts for 36.7% of the area population.
- For Northfield the proportion of all children aged 0 to 15 living in income deprived families is 16.3 and the proportion of those aged 60 or over who experience income deprivation is 12.2
- In Northfield, 18.5% of the population were disabled according to the Equality Act 2010, compared to 17.3% in Birmingham.
- In Northfield, 46.2% are in very good health, a -0.04% change on 2011. In comparison, in Birmingham 47.6% are in very good health, a 2.03% change in 2011.
- In Northfield, the proportion of residents aged 16 and over with no qualifications is 19.3%, a change of -0.06% since 2011. In comparison, 23.9% in Birmingham have no qualifications

- Northfield Library was opened in 1906 with money donated by Andrew Carnegie and land provided by the Cadbury family. The foundation stone was laid by Alderman T R Bayliss.
- During the night of 12 February 1914, the library was burnt to the ground despite the valiant efforts of the Northfield and Kings Heath fire brigades. Suspicion for the outrageous act fell on the local suffragettes. A paper found on the railings to the rear of the library proclaiming, Give Women the Vote together with a brown paper parcel containing a book by Christabel Pankhurst on which was written, to start your new library.
- The library was rebuilt by the Free Libraries Committee and opened in 1914.

Perry Common Library

Opening hours (per week)	27
Constituency	Perry Barr
Ward	Kingstanding
Population size (Census 2021)	21,171



Perry Common Library
 College Road
 Birmingham
 B44 0HH

Stage 1

Usage (Calendar Year 2023)	Computer Usage	1,297	Items Issued	13,428
----------------------------	----------------	-------	--------------	--------

Stage 2

Community Need		Accessibility			
Index of Multiple Deprivation (IMD) Score (1 = most deprived 10 = least deprived)	1	Journey time by car (from library location to nearest alternative Library) - less than 20 mins	Yes	Journey time by public transport to alternative library - (from library location to nearest alternative Library) around or less than 30 mins	Yes
Travel distance to nearest alternative library	Kingstanding (1.24 miles away)				
Tier	2	Number of users (membership reserve)		23,303	
Building condition & maintenance costs suitability	Low	Number of new members added within the last year		529	

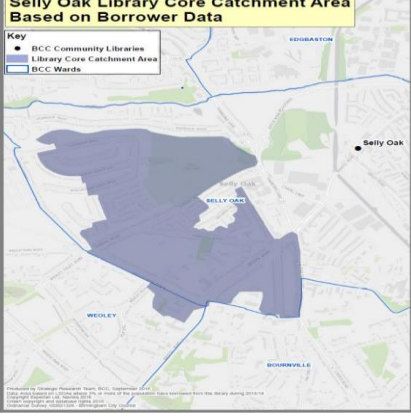
Summary of library and area information

- Kingstanding has a rank of 12 out of 69 wards in Birmingham and is in Decile 1. Of the 69 wards, 43 wards are in the top 20% most deprived (deciles 1 and 2) in the country.
- There are 21,171 people living in Kingstanding, 21.8% of the area population are aged 0-15 years old and 13.7% are aged 65 and over.
- The largest ethnic group in Kingstanding is White, which accounts for 70.4% of the area population.
- The largest religion within the area is Christian, which accounts for 46.8% of the ward population. This is followed by No religion, which accounts for 33.9% of the area population.
- For Kingstanding the proportion of all children aged 0 to 15 living in income deprived families is 35.3 and the proportion of those aged 60 or over who experience income deprivation is 28.6
- In Kingstanding , 21.3% of the population were disabled according to the Equality Act 2010, compared to 17.3% in Birmingham
- In Kingstanding 44.5% are in very good health, a 2.03% change on 2011. In comparison, in Birmingham 47.6% are in very good health, a 2.03% change in 2011.
- In Kingstanding , the proportion of residents aged 16 and over with no qualifications is 28.3%, a change of -0.20% since 2011. In comparison, 23.9% in Birmingham have no qualifications.

- Witton Lodge currently occupy the large community room on the ground floor of Perry Common to offer service provision on a part time basis.
- A £665,000 investment was made in 2010 which enabled improvements to the Grade II listed library including the replacement of all skylights, high level windows and roof coverings to ensure the building was watertight

Quinton Library

Opening hours (per week)	35
Constituency	Edgbaston
Ward	Quinton
Population size (Census 2021)	21,372



Quinton Library
 Ridgacre Road
 Birmingham
 B32 2TW

Stage 1

Usage (Calendar Year 2023)	Computer Usage	1,506	Items Issued	32,900
----------------------------	----------------	-------	--------------	--------

Stage 2

Community Need		Accessibility			
Index of Multiple Deprivation (IMD) Score (1 = most deprived 10 = least deprived)	3	Journey time by car (from library location to nearest alternative Library) - less than 20 mins	Yes	Journey time by public transport to alternative library - (from library location to nearest alternative Library) around or less than 30 mins	Yes
Travel distance to nearest alternative library	Harborne (1.54 miles away)				
Tier	1	Number of users (membership reserve)		50,666	
Building condition & maintenance costs suitability	Low	Number of new members added within the last year		709	

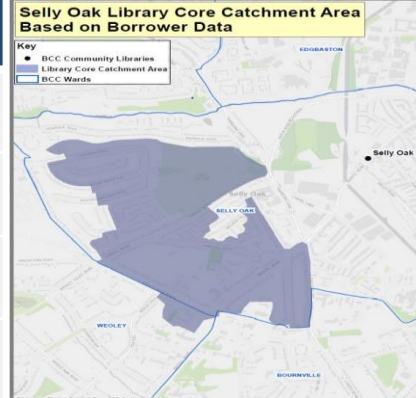
Summary of library and area information

- Quinton has a rank of 51 out of 69 wards in Birmingham and is in Decile 3. Of the 69 wards, 43 wards are in the top 20% most deprived (deciles 1 and 2) in the country.
- There are 21,372 people living in Quinton, 19.4% of the area population are aged 0-15 years old and 17.0% are aged 65 and over.
- The largest ethnic group in Quinton is White, which accounts for 60.0% of the area population.
- The largest religion within the area is Christian, which accounts for 44.0% of the ward population. This is followed by No religion, which accounts for 28.1% of the area population.
- For Quinton the proportion of all children aged 0 to 15 living in income deprived families is 23.8 and the proportion of those aged 60 or over who experience income deprivation is 18.0
- In Quinton, 17.3.% of the population were disabled according to the Equality Act 2010, compared to 17.3% in Birmingham.
- In Quinton, 47.6% are in very good health, a 0.03% change on 2011. In comparison, in Birmingham 47.6% are in very good health, a 2.03% change in 2011.
- In Quinton, the proportion of residents aged 16 and over with no qualifications is 20.0%, a change of -0.12% since 2011. In comparison, 23.9% in Birmingham have no qualifications.

- Quinton Library is in the centre of the ward sharing premises with the Quinborne Community Centre.

Selly Oak Library

Opening hours (per week)	10.5
Constituency	Selly Oak
Ward	Bournbrook & Selly Park
Population size (Census 2021)	22,536



Selly Oak Library
 Touchbase Pears
 Bristol Road
 Birmingham
 B29 6NA

Stage 1

Usage (Calendar Year 2023)	Computer Usage	No data available	Items Issued	5,464
----------------------------	----------------	-------------------	--------------	-------

Stage 2

Community Need		Accessibility			
Index of Multiple Deprivation (IMD) Score (1 = most deprived 10 = least deprived)	5	Journey time by car (from library location to nearest alternative Library) - less than 20 mins	Yes	Journey time by public transport to alternative library - (from library location to nearest alternative Library) around or less than 30 mins	Yes
Travel distance to nearest alternative library	Stirchley (1.17 miles away)				
Tier	3	Number of users (membership reserve)		13,707	
Building condition & maintenance costs suitability	Not a BCC building	Number of new members added within the last year		263	

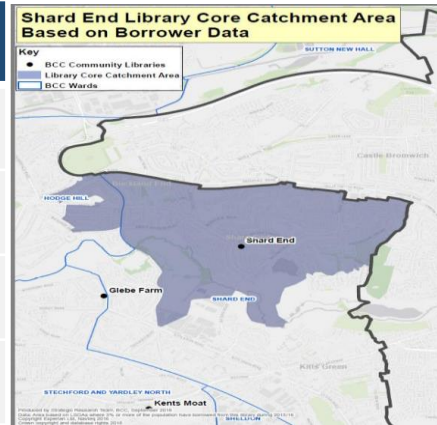
Summary of library and area information

- Bournbrook & Selly Park has a rank of 60 out of 69 wards in Birmingham and is in Decile 5. Of the 69 wards, 43 wards are in the top 20% most deprived (deciles 1 and 2) in the country.
- There are 22,356 people living in Bournbrook & Selly Park, 7.5% of the area population are aged 0-15 years old and 6.3% are aged 65 and over.
- The largest ethnic group in Bournbrook & Selly Park is White, which accounts for 65.5% of the area population.
- The largest religion within the area is No religion, which accounts for 45.5% of the ward population. This is followed by Christian, which accounts for 28.3% of the area population.
- For Bournbrook & Selly Park the proportion of all children aged 0 to 15 living in income deprived families is 18.4 and the proportion of those aged 60 or over who experience income deprivation is 16.2
- In Bournbrook & Selly Park, 16.8% of the population were disabled according to the Equality Act 2010, compared to 17.3% in Birmingham.
- In Bournbrook & Selly Park, 54.7% are in very good health, a -0.03% change on 2011. In comparison, in Birmingham 47.6% are in very good health, a 2.03% change in 2011.
- In Bournbrook & Selly Park, the proportion of residents aged 16 and over with no qualifications is 8.6%, a change of 0.02% since 2011. In comparison, 23.9% in Birmingham have no qualifications

- On Tuesdays, Wednesdays, Thursdays and Fridays, the library is accessible when the café at TouchBase Pears is open. Users can return and borrow books using the self-service kiosk.
- Currently there is no publicly accessible IT provision within Selly Oak Library.
- A Carnegie Library of red brick with terracotta and stone dressings and a plain tile roof, built in 1905 to the designs of the Birmingham architect, John P Osborne.

Shard End Library

Opening hours (per week)	35
Constituency	Hodge Hill
Ward	Shard End
Population size (Census 2021)	12,317



Shard End Library
 The Shard
 All Saints Square
 Shard End Crescent
 Birmingham
 B34 7AQ

Stage 1

Usage (Calendar Year 2023)	Computer Usage	2,092	Items Issued	13,149
----------------------------	----------------	-------	--------------	--------

Stage 2

Community Need		Accessibility			
Index of Multiple Deprivation (IMD) Score (1 = most deprived 10 = least deprived)	1	Journey time by car (from library location to nearest alternative Library) - less than 20 mins	Yes	Journey time by public transport to alternative library - (from library location to nearest alternative Library) around or less than 30 mins	Yes
Travel distance to nearest alternative library	Glebe Farm (0.56 miles away)				
Tier	1	Number of users (membership reserve)		25,081	
Building condition & maintenance costs suitability	High	Number of new members added within the last year		649	

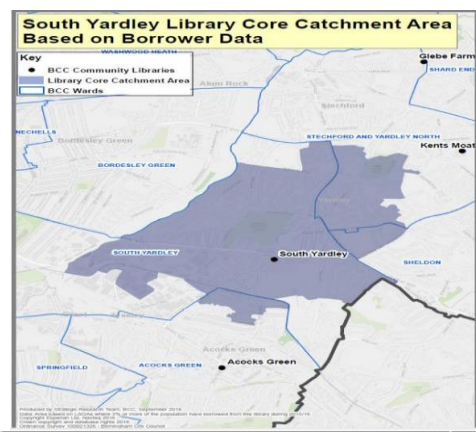
Summary of library and area information

- Shard End has a rank of 11 out of 69 wards in Birmingham and is in Decile 1. Of the 69 wards, 43 wards are in the top 20% most deprived (deciles 1 and 2) in the country.
- There are 12,317 people living in Shard End, 22.6% of the area population are aged 0-15 years old and 14.5% are aged 65 and over.
- The largest ethnic group in Shard End is White, which accounts for 77.3% of the area population.
- The largest religion within the area is Christian, which accounts for 44.0% of the ward population. This is followed by No religion, which accounts for 28.1% of the area population.
- For Shard End the proportion of all children aged 0 to 15 living in income deprived families is 35.4 and the proportion of those aged 60 or over who experience income deprivation is 32.0
- In Shard End, 23.2% of the population were disabled according to the Equality Act 2010, compared to 17.3% in Birmingham.
- In Shard End, 42.6% are in very good health, a -0.02% change on 2011. In comparison, in Birmingham 47.6% are in very good health, a 2.03% change in 2011.
- In Shard End, the proportion of residents aged 16 and over with no qualifications is 29.5%, a change of -0.15% since 2011. In comparison, 23.9% in Birmingham have no qualifications

- There is a large car park in front of the library.
- The Shard, Birmingham's newest library (2012), is a distinctive red colour with a sharp point rising from it which changes colour as the sunlight level changes.
- Shard End's library users had to wait until 1967 when a purpose-built library was opened in Shustoke Road. An issue rate of over 100,000 book loans in the first five months vindicated those who had lobbied so long and hard for this permanent provision.
- The new library brought the latest professional facilities to Shard End, and it was the first branch library in the city to use plastic membership cards rather than traditional cardboard ticket.

Sheldon Library

Opening hours (per week)	21
Constituency	Yardley
Ward	Sheldon
Population size (Census 2021)	19,939



Sheldon Library
 Brays Road
 Birmingham
 B26 2RJ

Stage 1

Usage (Calendar Year 2023)	Computer Usage	336	Items Issued	9,819
----------------------------	----------------	-----	--------------	-------

Stage 2

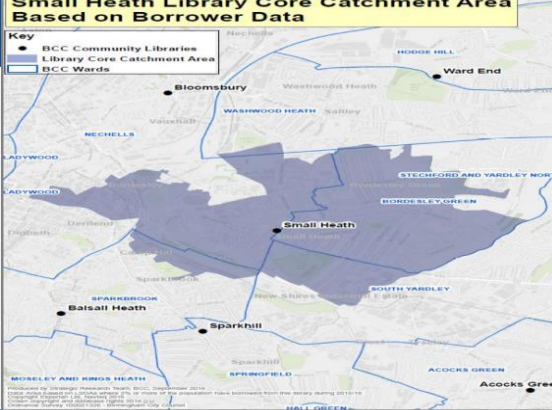
Community Need		Accessibility			
Index of Multiple Deprivation (IMD) Score (1 = most deprived 10 = least deprived)	3	Journey time by car (from library location to nearest alternative Library) - less than 20 mins	Yes	Journey time by public transport to alternative library - (from library location to nearest alternative Library) around or less than 30 mins	Yes
Travel distance to nearest alternative library	South Yardley (1.31 miles away)				
Tier	2	Number of users (membership reserve)		18,232	
Building condition & maintenance costs suitability	Low	Number of new members added within the last year		425	

Summary of library and area information

- Sheldon has a rank of 45 out of 69 wards in Birmingham and is in Decile 3. Of the 69 wards, 43 wards are in the top 20% most deprived (deciles 1 and 2) in the country.
- There are 19,939 people living in Sheldon, 18.7% of the area population are aged 0-15 years old and 17.3% are aged 65 and over.
- The largest ethnic group in Sheldon is White, which accounts for 74.2% of the area population.
- The largest religion within the area is Christian, which accounts for 46.8% of the ward population. This is followed by No religion, which accounts for 30.5% of the area population.
- For Sheldon, the proportion of all children aged 0 to 15 living in income deprived families is 24.4 and the proportion of those aged 60 or over who experience income deprivation is 17.8
- In Sheldon Green, 18.3% of the population were disabled according to the Equality Act 2010, compared to 17.3% in Birmingham.
- In Sheldon, 44.6% are in very good health, a 2.03% change on 2011. In comparison, in Birmingham 47.6% are in very good health, a 2.03% change in 2011.
- In Sheldon, the proportion of residents aged 16 and over with no qualifications is 24.1%, a change of -0.16% since 2011. In comparison, 23.9% in Birmingham have no qualifications.

Small Heath Library

Opening hours (per week)	35
Constituency	Ladywood
Ward	Bordsely Green
Population size (Census 2021)	12,952



Small Heath Library
Muntz Street
Birmingham
B10 9RX

Stage 1

Usage (Calendar Year 2023)	Computer Usage	3,200	Items Issued	22,905
----------------------------	----------------	-------	--------------	--------

Stage 2

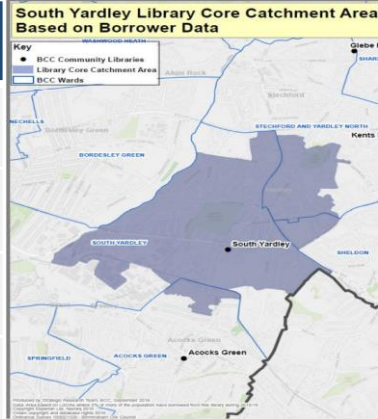
Community Need		Accessibility			
Index of Multiple Deprivation (IMD) Score (1 = most deprived 10 = least deprived)	1	Journey time by car (from library location to nearest alternative Library) - less than 20 mins	Yes	Journey time by public transport to alternative library - (from library location to nearest alternative Library) around or less than 30 mins	Yes
Travel distance to nearest alternative library	Bloomsbury (1.52 miles away)				
Tier	1	Number of users (membership reserve)		45,684	
Building condition & maintenance costs suitability	High	Number of new members added within the last year		1,014	

Summary of library and area information

- Bordsely Green has a rank of 2 out of 69 wards in Birmingham and is in Decile 1. Of the 69 wards, 43 wards are in the top 20% most deprived (deciles 1 and 2) in the country.
- There are 12,952 people living in Bordsely Green, 28.3% of the area population are aged 0-15 years old and 7.4% are aged 65 and over.
- The largest ethnic group in Bordsely Green is Asian, Asian British, which accounts for 61.2% of the area population.
- The largest religion within the area is Muslim, which accounts for 80.2% of the ward population. This is followed by Christian, which accounts for 9.2% of the area population.
- For Bordsely Green the proportion of all children aged 0 to 15 living in income deprived families is 32.6 and the proportion of those aged 60 or over who experience income deprivation is 57.3
- In Bordsely Green, 14.4% of the population were disabled according to the Equality Act 2010, compared to 17.3% in Birmingham.
- In Small Heath, 46.9% are in very good health, a 0.07% change on 2011. In comparison, in Birmingham 47.6% are in very good health, a 2.03% change in 2011.
- In Bordsely Green, the proportion of residents aged 16 and over with no qualifications is 35.8%, a change of -0.01% since 2011. In comparison, 23.9% in Birmingham have no qualifications.
- The original Small Heath Public Library and Baths stands at the corner of Green Lane and Little Green Lane and has been Grade II listed since 1982.
- Designed by prominent Birmingham architects William Martin and John Henry Chamberlain, it was built of red brick and terracotta in the Gothic-Jacobean style.
- In 1977, Small Heath library and swimming baths were integrated into the site of Small Heath Community School on Muntz Street.
- The original library building was sold for £24,000 in 1979 to The Markazi Jamiat Ahl-e-Hadith UK, who converted the site into a mosque.

South Yardley Library

Opening hours (per week)	35
Constituency	Yardley
Ward	South Yardley
Population size (Census 2021)	10,790



South Yardley Library
 Yardley Road
 Birmingham
 B25 8LT

Stage 1

Usage (Calendar Year 2023)	Computer Usage	4,420	Items Issued	38,640
----------------------------	----------------	-------	--------------	--------

Stage 2

Community Need		Accessibility			
Index of Multiple Deprivation (IMD) Score (1 = most deprived 10 = least deprived)	3	Journey time by car (from library location to nearest alternative Library) - less than 20 mins	Yes	Journey time by public transport to alternative library - (from library location to nearest alternative Library) around or less than 30 mins	Yes
Travel distance to nearest alternative library	Acocks Green (1.04 miles away)				
Tier	1	Number of users (membership reserve)		60,112	
Building condition & maintenance costs suitability	Medium	Number of new members added within the last year		1,035	

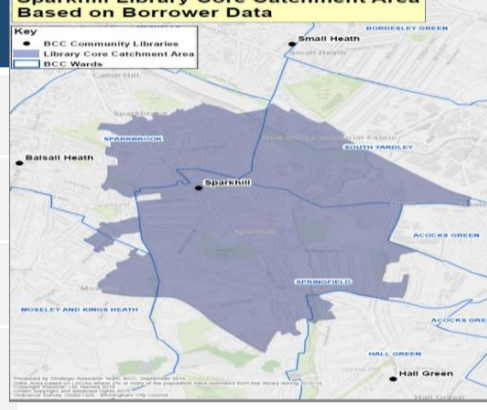
Summary of library and area information

- South Yardley has a rank of 48 out of 69 wards in Birmingham and is in Decile 3. Of the 69 wards, 43 wards are in the top 20% most deprived (deciles 1 and 2) in the country.
- There are 10,790 people living in South Yardley, 21.4% of the area population are aged 0-15 years old and 13.3% are aged 65 and over.
- The largest ethnic group in South Yardley is White, which accounts for 62.5% of the area population.
- The largest religion within the area is Christian, which accounts for 39.6% of the ward population. This is followed by No religion, which accounts for 26.1% of the area population.
- For South Yardley, the proportion of all children aged 0 to 15 living in income deprived families is 17.3 and the proportion of those aged 60 or over who experience income deprivation is 19.8.
- In South Yardley, 16.9% of the population were disabled according to the Equality Act 2010, compared to 17.3% in Birmingham.
- In South Yardley,, 46.3% are in very good health, a 0.01% change on 2011. In comparison, in Birmingham 47.6% are in very good health, a 2.03% change in 2011.
- In South Yardley,, the proportion of residents aged 16 and over with no qualifications is 22.4%, a change of -0.07% since 2011. In comparison, 23.9% in Birmingham have no qualifications

- South Yardley Library acts as the focus for local history activity in Yardley. The Yardley History Group meets in the library once a month and has its own archive of local history materials.
- The Library has a collection of photographs and maps, as well as a selection of books about Birmingham and the surrounding area.

Sparkhill Library

Opening hours (per week)	35
Constituency	Hall Green
Ward	Sparkhill
Population size (Census 2021)	21,454



Sparkhill Library
 641 Stratford Road
 Birmingham
 B11 4EA

Stage 1

Usage (Calendar Year 2023)	Computer Usage	3,046	Items Issued	25,916
----------------------------	----------------	-------	--------------	--------

Stage 2

Community Need		Accessibility			
Index of Multiple Deprivation (IMD) Score (1 = most deprived 10 = least deprived)	2	Journey time by car (from library location to nearest alternative Library) - less than 20 mins	Yes	Journey time by public transport to alternative library - (from library location to nearest alternative Library) around or less than 30 mins	Yes
Travel distance to nearest alternative library	Balsall Heath (1.06 miles away)				
Tier	2	Number of users (membership reserve)		46,067	
Building condition & maintenance costs suitability	Low	Number of new members added within the last year		939	

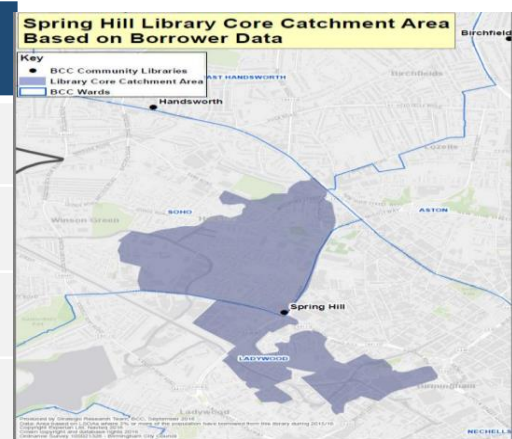
Summary of library and area information

- Sparkhill has a rank of 30 out of 69 wards in Birmingham and is in Decile 2. Of the 69 wards, 43 wards are in the top 20% most deprived (deciles 1 and 2) in the country.
- There are 21,454 people living in Sparkhill, 24.7% of the area population are aged 0-15 years old and 9.1% are aged 65 and over.
- The largest ethnic group in Sparkhill is Asian, Asian British, which accounts for 78.5% of the area population.
- The largest religion within the area is Muslim, which accounts for 79.3% of the ward population. This is followed by Christian, which accounts for 7.8% of the area population.
- For Sparkhill the proportion of all children aged 0 to 15 living in income deprived families is 27.8 and the proportion of those aged 60 or over who experience income deprivation is Spark Hill.
- In Sparkhill, 14.2% of the population were disabled according to the Equality Act 2010, compared to 17.3% in Birmingham.
- In Sparkhill, 46.1% are in very good health, a 0.03% change on 2011. In comparison, in Birmingham 47.6% are in very good health, a 2.03% change in 2011.
- In Sparkhill, the proportion of residents aged 16 and over with no qualifications is 33.1%, a change of 0.01% since 2011. In comparison, 23.9% in Birmingham have no qualifications

- Parking is available in the Community and Leisure Services carpark, which is off Court Road at the side of the library

Spring Hill Library - *closed as of Spring 2022

Opening hours (per week)	-
Constituency	Ladywood
Ward	Soho & Jewellery Quarter
Population size (Census 2021)	25,456



Spring Hill Library
 Spring Hill
 Birmingham
 B18 7BH

Stage 1

Usage (Calendar Year 2023)	Computer Usage	28	Items Issued	-
----------------------------	----------------	----	--------------	---

Stage 2

Community Need		Accessibility			
Index of Multiple Deprivation (IMD) Score (1 = most deprived 10 = least deprived)	2	Journey time by car (from library location to nearest alternative Library) - less than 20 mins	Yes	Journey time by public transport to alternative library - (from library location to nearest alternative Library) around or less than 30 mins	Yes
Travel distance to nearest alternative library	Library of Birmingham (0.68 miles away)				
Tier	-	Number of users (membership reserve)		5,245	
Building condition & maintenance costs suitability	(Closed) Low	Number of new members added within the last year		65	

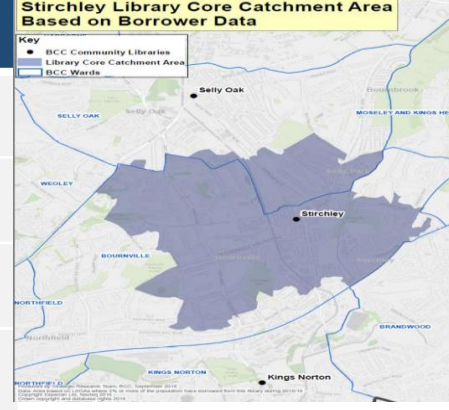
Summary of library and area information

- Soho & Jewellery Quarter has a rank of 29 out of 69 wards in Birmingham and is in Decile 2. Of the 69 wards, 43 wards are in the top 20% most deprived (deciles 1 and 2) in the country.
- There are 25,456 people living in Soho & Jewellery Quarter, 18.1% of the area population are aged 0-15 years old and 6.8% are aged 65 and over.
- The largest ethnic group in Soho & Jewellery Quarter is Asian, Asian British, which accounts for 32.5% of the area population.
- The largest religion within the area is Christian, which accounts for 30.8% of the ward population. This is followed by Muslim, which accounts for 25.5% of the area population.
- For Soho & Jewellery Quarter the proportion of all children aged 0 to 15 living in income deprived families is 38.1 and the proportion of those aged 60 or over who experience income deprivation is 41.3.
- In Soho & Jewellery Quarter, 14.7% of the population were disabled according to the Equality Act 2010, compared to 17.3% in Birmingham.
- In Soho & Jewellery Quarter, 49.8% are in very good health, a 2.03% change on 2011. In comparison, in Birmingham 47.6% are in very good health, a 2.03% change in 2011.
- In Soho & Jewellery Quarter, the proportion of residents aged 16 and over with no qualifications is 22.%, a change of -0.02% since 2011. In comparison, 23.9% in Birmingham have no qualifications.

- Spring Hill library is closed due to issues with the building.
- Spring Hill Library is located next to a roundabout and linked via a glazed atrium to a new (2010) Tesco superstore.
- Spring Hill Library is a Grade II listed building.
- Spring Hill Library has made the news on several occasions. In its first year of opening, it issued more books per day than any of the city branch libraries, and in 1895 a man was sentenced to six weeks in prison with hard labour for throwing books around the library and resisting arrest.

Stirchley Library

Opening hours (per week)	21
Constituency	Selly Oak
Ward	Stirchley
Population size (Census 2021)	10,128



Stirchley Library
 Bourneville Lane
 Birmingham
 B30 2JT

Stage 1

Usage (Calendar Year 2023)	Computer Usage	870	Items Issued	33,219
----------------------------	----------------	-----	--------------	--------

Stage 2

Community Need		Accessibility			
Index of Multiple Deprivation (IMD) Score (1 = most deprived 10 = least deprived)	3	Journey time by car (from library location to nearest alternative Library) - less than 20 mins	Yes	Journey time by public transport to alternative library - (from library location to nearest alternative Library) around or less than 30 mins	Yes
Travel distance to nearest alternative library	Selly Oak (1.04 miles away)				
Tier	2/3	Number of users (membership reserve)		45,710	
Building condition & maintenance costs suitability	Medium	Number of new members added within the last year		544	

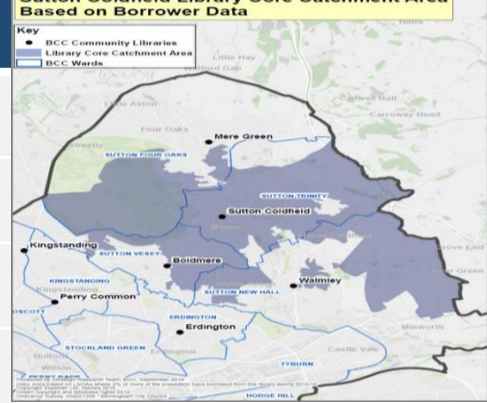
Summary of library and area information

- Stirchley has a rank of 46 out of 69 wards in Birmingham and is in Decile 3. Of the 69 wards, 43 wards are in the top 20% most deprived (deciles 1 and 2) in the country.
- There are 10,128 people living in Stirchley, 18.3% of the area population are aged 0-15 years old and 12.5% are aged 65 and over.
- The largest ethnic group in Stirchley is White, which accounts for 72.0% of the area population.
- The largest religion within the area is No religion, which accounts for 40.9% of the ward population. This is followed by Christian, which accounts for 36.3% of the area population.
- For Stirchley the proportion of all children aged 0 to 15 living in income deprived families is 23.3 and the proportion of those aged 60 or over who experience income deprivation is 21.2.
- In Stirchley 19.4% of the population were disabled according to the Equality Act 2010, compared to 17.3% in Birmingham.
- In Stirchley, 46.5% are in very good health, a -0.01% change on 2011. In comparison, in Birmingham 47.6% are in very good health, a 2.03% change in 2011.
- In Stirchley, the proportion of residents aged 16 and over with no qualifications is 17.6%, a change of -0.18% since 2011. In comparison, -0.06% in Birmingham have no qualifications.

- Stirchley library is held on charitable trust by Birmingham City Council as sole trustee.

Sutton Coldfield Library

Opening hours (per week)	35
Constituency	Sutton Coldfield
Ward	Sutton Trinity
Population size (Census 2021)	9,479



Stirchley Library
 Lower Parade
 Sutton Coldfield
 Birmingham
 B72 1XX

Stage 1

Usage (Calendar Year 2023)	Computer Usage	3,216	Items Issued	32,026
----------------------------	----------------	-------	--------------	--------

Stage 2

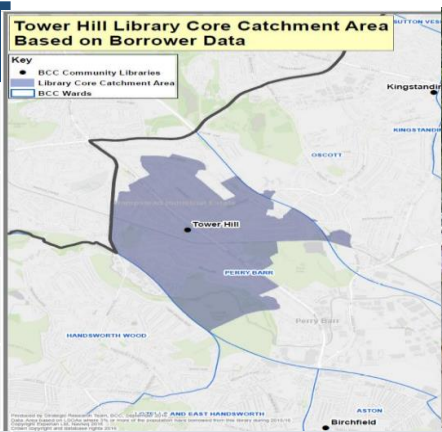
Community Need		Accessibility			
Index of Multiple Deprivation (IMD) Score (1 = most deprived 10 = least deprived)	6	Journey time by car (from library location to nearest alternative Library) - less than 20 mins	Yes	Journey time by public transport to alternative library - (from library location to nearest alternative Library) around or less than 30 mins	Yes
Travel distance to nearest alternative library	Boldmere (1.3 miles away)				
Tier	1	Number of users (membership reserve)		50,964	
Building condition & maintenance costs suitability	Low	Number of new members added within the last year		815	

Summary of library and area information

- Sutton Trinity has a rank of 63 out of 69 wards in Birmingham and is in Decile 6. Of the 69 wards, 43 wards are in the top 20% most deprived (deciles 1 and 2) in the country.
- There are 9,479 people living in Sutton Trinity, 16.6% of the area population are aged 0-15 years old and 21.9% are aged 65 and over.
- The largest ethnic group in Sutton Trinity is White, which accounts for 83.4% of the area population.
- The largest religion within the area is Christian, which accounts for 49.8% of the ward population. This is followed by No Religion, which accounts for 35.7% of the area population.
- For Sutton Trinity, the proportion of all children aged 0 to 15 living in income deprived families is 6.8 and the proportion of those aged 60 or over who experience income deprivation is 9.4
- In Sutton Trinity, 14.9% of the population were disabled according to the Equality Act 2010, compared to 17.3% in Birmingham.
- In Sutton Trinity, 53.1% are in very good health, a 0.02% change on 2011. In comparison, in Birmingham 47.6% are in very good health, a 2.03% change in 2011.
- In Sutton Trinity, the proportion of residents aged 16 and over with no qualifications is 12.6%, a change of -0.4% since 2011. In comparison, 23.9% in Birmingham have no qualifications.

Tower Hill Library

Opening hours (per week)	21
Constituency	Perry Barr
Ward	Perry Barr
Population size (Census 2021)	20,609



Tower Hill Library
 Tower Hill
 Birmingham
 B42 1LG

Stage 1

Usage (Calendar Year 2023)	Computer Usage	934	Items Issued	19,487
----------------------------	----------------	-----	--------------	--------

Stage 2

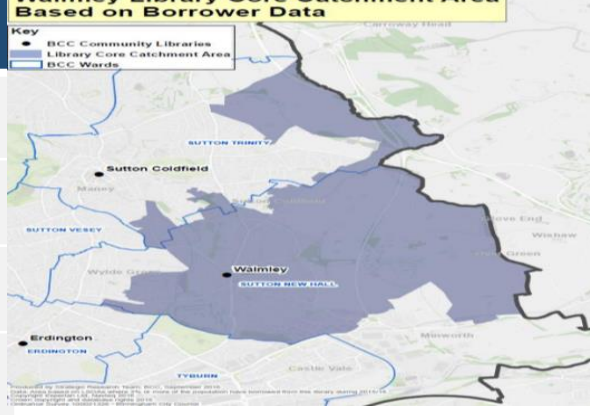
Community Need		Accessibility			
Index of Multiple Deprivation (IMD) Score (1 = most deprived 10 = least deprived)	4	Journey time by car (from library location to nearest alternative Library) - less than 20 mins	Yes	Journey time by public transport to alternative library - (from library location to nearest alternative Library) around or less than 30 mins	Yes
Travel distance to nearest alternative library	Perry Common (1.87 miles away)				
Tier	2	Number of users (membership reserve)		31,336	
Building condition & maintenance costs suitability	Low	Number of new members added within the last year		497	

Summary of library and area information

- Perry Barr has a rank of 56 out of 69 wards in Birmingham and is in Decile 4. Of the 69 wards, 43 wards are in the top 20% most deprived (deciles 1 and 2) in the country.
- There are 20,609 people living in Perry Barr, 20.0% of the area population are aged 0-15 years old and 15.1% are aged 65 and over.
- The largest ethnic group in Perry Barr is White, which accounts for 43.0% of the area population.
- The largest religion within the area is Christian, which accounts for 39.9% of the ward population. This is followed by Muslim, which accounts for 23.6% of the area population.
- For Perry Barr, the proportion of all children aged 0 to 15 living in income deprived families is 19.3 and the proportion of those aged 60 or over who experience income deprivation is 18.1
- In Perry Barr, 14.9% of the population were disabled according to the Equality Act 2010, compared to 17.3% in Birmingham.
- In Perry Barr, 45.8% are in very good health, a 0.02% change on 2011. In comparison, in Birmingham 47.6% are in very good health, a 2.03% change in 2011.
- In Perry Barr, the proportion of residents aged 16 and over with no qualifications is 21.7%, a change of -0.07% since 2011. In comparison, 23.9% in Birmingham have no qualifications.

Walmley Library

Opening hours (per week)	21
Constituency	Sutton Coldfield
Ward	Sutton Walmley & Minworth
Population size (Census 2021)	16,338



Walmley Library
Walmley Road
Birmingham
B76 1NP

Stage 1

Usage (Calendar Year 2023)	Computer Usage	915	Items Issued	25,987
----------------------------	----------------	-----	--------------	--------

Stage 2

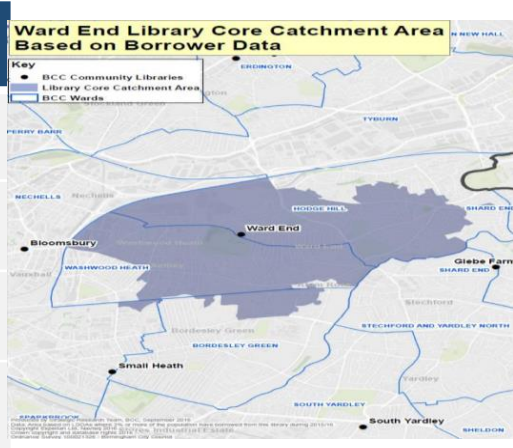
Community Need		Accessibility			
Index of Multiple Deprivation (IMD) Score (1 = most deprived 10 = least deprived)	7	Journey time by car (from library location to nearest alternative Library) - less than 20 mins	Yes	Journey time by public transport to alternative library - (from library location to nearest alternative Library) around or less than 30 mins	Yes
Travel distance to nearest alternative library	Castle Vale (2.15 miles away)				
Tier	2	Number of users (membership reserve)		37,806	
Building condition & maintenance costs suitability	Medium	Number of new members added within the last year		428	

Summary of library and area information

- Sutton Walmley & Minworth has a rank of 64 out of 69 wards in Birmingham and is in Decile 7. Of the 69 wards, 43 wards are in the top 20% most deprived (deciles 1 and 2) in the country.
 - There are 16,338 people living in Sutton Walmley & Minworth, 15.9% of the area population are aged 0-15 years old and 24.3% are aged 65 and over.
 - The largest ethnic group in Pein Sutton Walmley & Minworth is White, which accounts for 84.7% of the area population.
 - The largest religion within the area is Christian, which accounts for 58.6% of the ward population. This is followed by No Religion, which accounts for 28.9% of the area population.
 - For Sutton Walmley & Minworth, the proportion of all children aged 0 to 15 living in income deprived families is 6.7 and the proportion of those aged 60 or over who experience income deprivation is 9.8
 - In Sutton Walmley & Minworth, 15.8% of the population were disabled according to the Equality Act 2010, compared to 17.3% in Birmingham.
 - In Sutton Walmley & Minworth, 49.2% are in very good health, a -0.06% change on 2011. In comparison, in Birmingham 47.6% are in very good health, a 2.03% change in 2011.
 - In Sutton Walmley & Minworth, the proportion of residents aged 16 and over with no qualifications is 17.4%, a change of -0.08% since 2011. In comparison, 23.9% in Birmingham have no qualifications.
- Walmley Library is supported by funding from Sutton Coldfield Charitable Trusts

Ward End Library

Opening hours (per week)	35
Constituency	Hodge Hill
Ward	Ward End
Population size (Census 2021)	13,710



Ward End Library
 Washwood Heath Road
 Birmingham
 B8 2HF

Stage 1

Usage (Calendar Year 2023)	Computer Usage	3,452	Items Issued	24,723
----------------------------	----------------	-------	--------------	--------

Stage 2

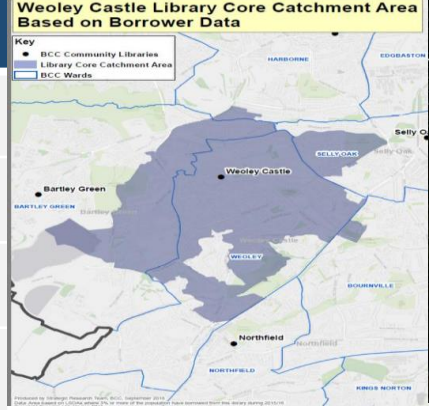
Community Need		Accessibility			
Index of Multiple Deprivation (IMD) Score (1 = most deprived 10 = least deprived)	1	Journey time by car (from library location to nearest alternative Library) - less than 20 mins	Yes	Journey time by public transport to alternative library - (from library location to nearest alternative Library) around or less than 30 mins	Yes
Travel distance to nearest alternative library	Bloomsbury library at The pod (1.54 miles away)				
Tier	1	Number of users (membership reserve)		50,495	
Building condition & maintenance costs suitability	Medium	Number of new members added within the last year		1,148	

Summary of library and area information

- Ward End has a rank of 18 out of 69 wards in Birmingham and is in Decile 1. Of the 69 wards, 43 wards are in the top 20% most deprived (deciles 1 and 2) in the country.
- There are 13,710 people living in Ward End, 27.6% of the area population are aged 0-15 years old and 7.3% are aged 65 and over.
- The largest ethnic group in Ward End is Asian, Asian British, which accounts for 67.8% of the area population.
- The largest religion within the area is Muslim, which accounts for 74.6% of the ward population. This is followed by Christian, which accounts for 12.9% of the area population.
- For Ward End the proportion of all children aged 0 to 15 living in income deprived families is 30.7 and the proportion of those aged 60 or over who experience income deprivation is 42.4
- In Ward End, 13.2% of the population were disabled according to the Equality Act 2010, compared to 17.3% in Birmingham.
- In Ward End, 49.5% are in very good health, a -0.03% change on 2011. In comparison, in Birmingham 47.6% are in very good health, a 2.03% change in 2011
- In Ward End the proportion of residents aged 16 and over with no qualifications is 33.4%, a change of -0.03% since 2011. In comparison, 23.9% in Birmingham have no qualifications.

Weoley Castle Library

Opening hours (per week)	35
Constituency	Northfield
Ward	Weoley & Selly Oak
Population size (Census 2021)	23,516



Weoley Castle Library
 76 Beckbury Road
 Birmingham
 B29 5HR

Stage 1

Usage (Calendar Year 2023)	Computer Usage	2,224	Items Issued	19,922
----------------------------	----------------	-------	--------------	--------

Stage 2

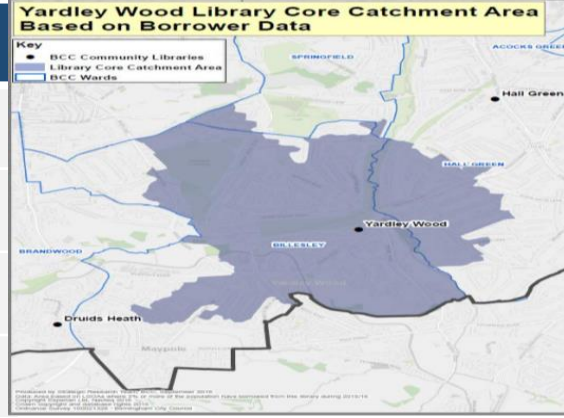
Community Need		Accessibility			
Index of Multiple Deprivation (IMD) Score (1 = most deprived 10 = least deprived)	2	Journey time by car (from library location to nearest alternative Library) - less than 20 mins	Yes	Journey time by public transport to alternative library - (from library location to nearest alternative Library) around or less than 30 mins	Yes
Travel distance to nearest alternative library	Bartley Green (1.27 miles away)				
Tier	1	Number of users (membership reserve)		34,728	
Building condition & maintenance costs suitability	Low	Number of new members added within the last year		805	

Summary of library and area information

- Weoley & Selly Oak has a rank of 35 out of 69 wards in Birmingham and is in Decile 2. Of the 69 wards, 43 wards are in the top 20% most deprived (deciles 1 and 2) in the country.
- There are 23,516 people living in Weoley & Selly Oak, 20.5% of the area population are aged 0-15 years old and 15.5% are aged 65 and over.
- The largest ethnic group in Weoley & Selly Oak is White, which accounts for 66.3% of the area population.
- The largest religion within the area is Christian, which accounts for 44.4% of the ward population. This is followed by No Religion, which accounts for 34.8% of the area population.
- For Weoley & Selly Oak the proportion of all children aged 0 to 15 living in income deprived families is 33.8 and the proportion of those aged 60 or over who experience income deprivation is 21.4
- In Weoley & Selly Oak, 21.0% of the population were disabled according to the Equality Act 2010, compared to 17.3% in Birmingham.
- In Weoley & Selly Oak, 45.5% are in very good health, a -0.05% change on 2011. In comparison, in Birmingham 47.6% are in very good health, a 2.03% change in 2011.
- In Weoley & Selly Oak, the proportion of residents aged 16 and over with no qualifications is 21.7%, a change of -0.15% since 2011. In comparison, 23.9% in Birmingham have no qualifications.

Yardley Wood Library

Opening hours (per week)	35
Constituency	Selly Oak
Ward	Billesley
Population size (Census 2021)	21,138



Yardley Wood Library
 Highfield Road
 Birmingham
 B14 4DU

Stage 1

Usage (Calendar Year 2023)	Computer Usage	1,577	Items Issued	40,911
----------------------------	----------------	-------	--------------	--------

Stage 2

Community Need		Accessibility			
Index of Multiple Deprivation (IMD) Score (1 = most deprived 10 = least deprived)	2	Journey time by car (from library location to nearest alternative Library) - less than 20 mins	Yes	Journey time by public transport to alternative library - (from library location to nearest alternative Library) around or less than 30 mins	Yes
Travel distance to nearest alternative library	Hall Green (1.17 miles away)				
Tier	1	Number of users (membership reserve)		60,917	
Building condition & maintenance costs suitability	Low	Number of new members added within the last year		706	

Summary of library and area information

- Billesley has a rank of 34 out of 69 wards in Birmingham and is in Decile 2. Of the 69 wards, 43 wards are in the top 20% most deprived (deciles 1 and 2) in the country.
- There are 21,138 people living in Billesley, 22.1% of the area population are aged 0-15 years old and 15.2% are aged 65 and over.
- The largest ethnic group in Billesley has a rank of 34 out of 69 wards in Birmingham and is in Decile 2. Of the 69 wards, 43 wards are in the top 20% most deprived (deciles 1 and 2) in the country.
- The largest ethnic group in Billesley is White, which accounts for 57.2% of the area population.
- The largest religion within the area is Christian, which accounts for 34.9% of the ward population. This is followed by Muslim, which accounts for 26.9% of the area population.
- For Billesley the proportion of all children aged 0 to 15 living in income deprived families is 29.8 and the proportion of those aged 60 or over who experience income deprivation is 25.4
- In Billesley, 19.5% of the population were disabled according to the Equality Act 2010, compared to 17.3% in Birmingham.
- In Billesley, 43.5% are in very good health, a 0.03% change on 2011. In comparison, in Birmingham 47.6% are in very good health, a 2.03% change in 2011.
- In Billesley, the proportion of residents aged 16 and over with no qualifications is 23.4%, a change of -0.15% since 2011. In comparison, 23.9% in Birmingham have no qualifications.