

Claimant Count Unemployment Monthly Update – April 2023 Data

Total Claimant Count

In April 2023, unadjusted claimant count numbers in the city increased by 2,390 to 64,155. The unadjusted claimant rate (% of the economically active population) increased to 11.7%, with the claimant proportion (% of the whole working age population) also increasing to 8.7%. Claimant numbers also increased in the WMCA (3 LEP area) and the UK last month.

Youth Claimant Count

In Birmingham, the unadjusted youth (18-24) claimant count increased by 170 in April to 11,360. The unadjusted youth unemployment rate increased to 12.4%, with the youth claimant proportion also increasing to 8.7%. Unadjusted youth unemployment rates also increased in the WMCA (10.5%) and for the UK as a whole (7.4%).

Core Cities

Table 1 below shows the unadjusted claimant count unemployment data for April 2023 for the core cities. Birmingham has the highest claimant unemployment rate (11.7%) amongst the core cities and is well above the UK average (4.7%). All of the ten core cities saw claimant numbers increase last month.

Table 1: Core City Claimant Count April 2023

Area	Claimant Count	Claimant Rate %	Monthly Change in Claimants	Monthly Change in Rate %
Birmingham	64,155	11.7	2,390	0.5
Manchester	24,425	8.5	990	0.4
Nottingham	12,920	8.2	480	0.3
Liverpool	19,515	8.0	380	0.1
Glasgow	22,700	6.9	790	0.2
Newcastle	9,490	6.6	130	0.1
Leeds	24,355	5.8	1,115	0.2
Sheffield	16,085	5.1	365	0.1
Cardiff	9,340	5.0	20	0.0
Bristol	11,150	4.2	245	0.1
UK	1,599,545	4.7	41,630	0.1
London	296,960	5.9	12,215	0.3

West Midlands Region

Table 2 displays the latest claimant count data for the region. Birmingham along with Wolverhampton, Sandwell and Walsall have the highest unemployment rates locally, with Coventry, Dudley and Solihull having lower rates, closer to or below the UK average. All of the seven Met areas saw an increase in unemployment in April, as did the GBSLEP and the West Midlands region.

Table 2: West Midlands Claimant Count April 2023

Area	Claimant Count	Claimant Rate %	Monthly Change in Claimants	Monthly Change in Rate %
Birmingham	64,155	11.7	2,390	0.5
Wolverhampton	13,065	11.0	425	0.4
Sandwell	14,145	9.6	540	0.4
Walsall	10,215	7.4	415	0.3
Coventry	13,265	6.8	625	0.3
Dudley	9,660	6.1	425	0.3
Solihull	4,315	4.0	105	0.1
GBSLEP	82,520	8.2	3,100	0.3
WMCA (3 LEPS)	153,075	7.4	5,810	0.3
West Midlands	187,025	6.4	6,390	0.2
UK	1,599,545	4.7	41,630	0.1

Birmingham Constituencies

Table 3 below shows the unadjusted claimant count unemployment data for April 2023 for the 10 parliamentary constituencies in the city. Hall Green constituency has the highest claimant count unemployment rate at 20.5% and Sutton Coldfield the lowest at 2.3%. All ten constituencies saw an increase in claimant numbers last month. The largest increase in claimant count numbers in April occurred in Ladywood (+580).

Table 3: Birmingham Constituency Claimant Count April 2023

Area	Claimant Count	Claimant Rate %	Monthly Change in Claimants	Monthly Change in Rate %
Edgbaston	4,915	9.4	105	0.2
Erdington	6,565	12.7	125	0.2
Hall Green	7,205	20.7	300	0.9
Hodge Hill	8,540	17.5	475	1.0
Ladywood	12,570	16.6	580	0.7
Northfield	4,865	7.5	155	0.3
Perry Barr	7,845	15.9	330	0.7
Selly Oak	4,150	6.0	15	0.0
Sutton Coldfield	1,315	2.3	40	0.1
Yardley	6,185	13.7	265	0.6
Birmingham	64,155	11.7	2,390	0.5

Birmingham Wards

Tables containing ward claimant count unemployment data and ward youth unemployment data are shown on the following pages.

Lozells (17.7%) and Handsworth (17.5%) have the highest claimant proportions. The Sutton wards (Sutton Reddicap aside) have the lowest claimant proportions, all 3% or under.

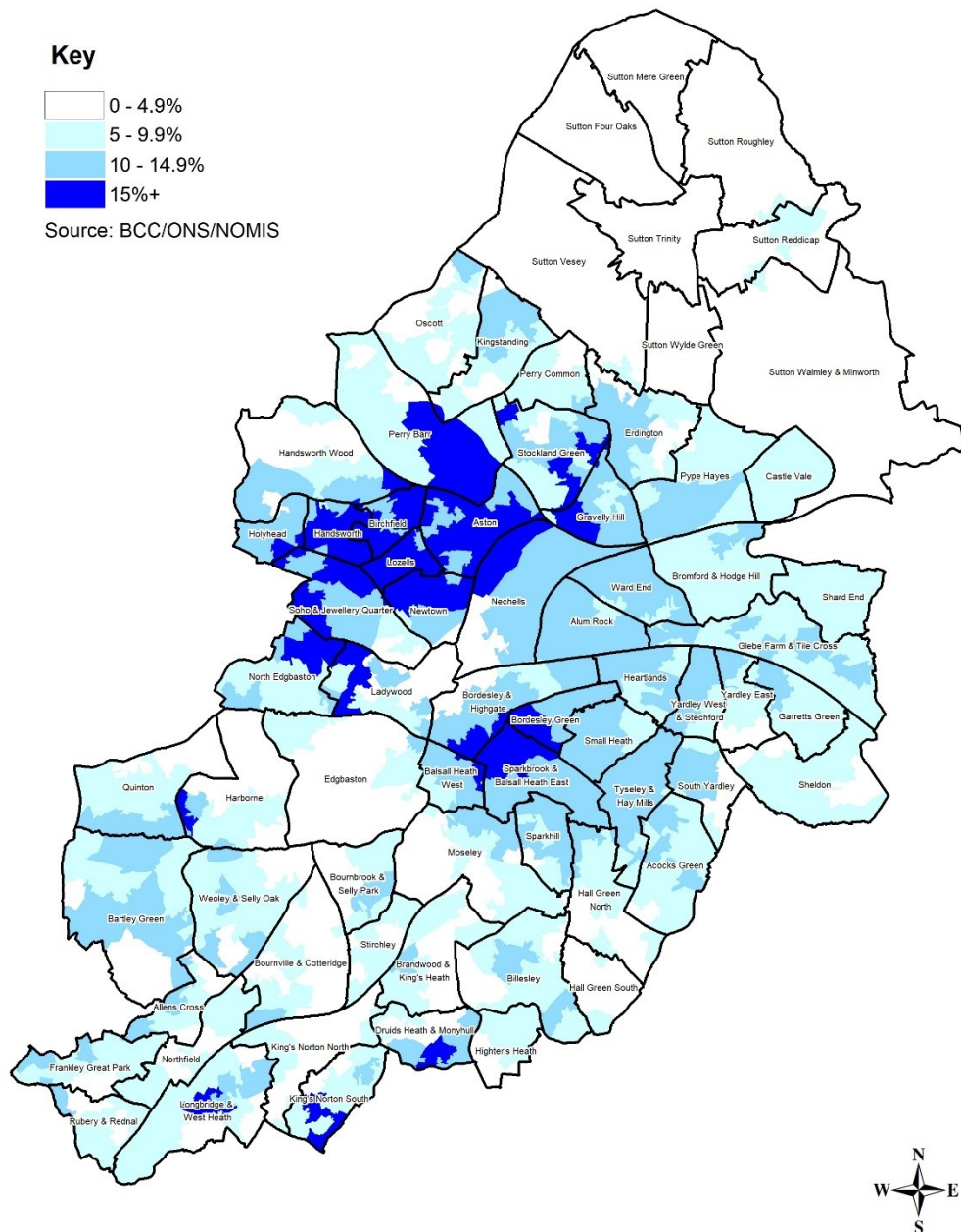
57 of the 69 wards in the city saw unemployment increase last month. The largest increase

in total claimant numbers at a ward level occurred in Alum Rock (+170) and Sparkbrook & Balsall Heath East (+130).

In terms of ward youth unemployment Handsworth (16.7%) and Aston (16.1%) have the highest youth claimant proportions. 30 of the city's wards saw youth claimant numbers increase last month.

The map below highlights that the highest levels of claimant unemployment are concentrated in the inner city and in areas to the north west of the city centre.

Map 1 Birmingham Claimant Count Unemployment Proportions March 2023



Date: 11/05/2023
Scale 1:110,000

Table 4 - Ward Claimant Unemployment April 2023

Area	Claimant Count	Claimant Proportion %	Monthly Change in Claimants	Monthly Change in Proportion %
Acocks Green	1,295	8.5	35	0.2
Allens Cross	560	8.7	25	0.3
Alum Rock	2,275	13.6	170	1.0
Aston	2,570	16.7	105	0.7
Balsall Heath West	835	10.6	-5	0.0
Bartley Green	1,285	9.3	15	0.1
Billesley	900	7.5	25	0.2
Birchfield	1,390	16.6	55	0.6
Bordesley & Highgate	1,230	10.8	70	0.6
Bordesley Green	1,130	14.3	85	1.1
Bournbrook & Selly Park	690	3.1	20	0.1
Bournville & Cotteridge	535	4.9	-5	0.0
Brandwood & King's Heath	715	6.1	15	0.1
Bromford & Hodge Hill	1,125	8.5	60	0.5
Castle Vale	500	8.4	10	0.2
Druids Heath & Monyhull	655	9.1	0	0.0
Edgbaston	660	4.0	15	0.1
Erdington	1,205	9.4	35	0.3
Frankley Great Park	640	8.9	35	0.5
Garretts Green	640	9.7	65	0.9
Glebe Farm & Tile Cross	1,425	9.9	35	0.3
Gravelly Hill	855	11.8	0	0.0
Hall Green North	1,015	7.1	45	0.4
Hall Green South	210	3.4	0	0.0
Handsworth	1,450	17.5	75	0.9
Handsworth Wood	1,085	8.0	5	0.0
Harborne	935	5.8	20	0.1
Heartlands	860	10.7	25	0.3
Highter's Heath	405	6.0	-10	-0.1
Holyhead	1,075	13.3	60	0.8
King's Norton North	390	5.7	15	0.2
King's Norton South	610	9.3	15	0.2
Kingstanding	1,150	8.9	35	0.2
Ladywood	1,755	7.1	80	0.4
Longbridge & West Heath	965	7.7	25	0.2
Lozells	1,100	17.7	55	0.9
Moseley	1,140	7.9	25	0.2
Nechells	1,170	9.6	55	0.4
Newtown	1,590	14.9	95	0.9
North Edgbaston	1,990	11.4	45	0.2

Northfield	1,295	8.5	35	0.2
Oscott	560	8.7	25	0.3
Perry Barr	2,275	13.6	170	1.0
Perry Common	2,570	16.7	105	0.7
Pype Hayes	835	10.6	-5	0.0
Quinton	1,285	9.3	15	0.1
Rubery & Rednal	900	7.5	25	0.2
Shard End	1,390	16.6	55	0.6
Sheldon	1,230	10.8	70	0.6
Small Heath	1,130	14.3	85	1.1
Soho & Jewellery Quarter	690	3.1	20	0.1
South Yardley	535	4.9	-5	0.0
Sparkbrook & Balsall Heath East	715	6.1	15	0.1
Sparkhill	1,125	8.5	60	0.5
Stirchley	500	8.4	10	0.2
Stockland Green	655	9.1	0	0.0
Sutton Four Oaks	660	4.0	15	0.1
Sutton Mere Green	1,205	9.4	35	0.3
Sutton Reddicap	640	8.9	35	0.5
Sutton Roughley	640	9.7	65	0.9
Sutton Trinity	1,425	9.9	35	0.3
Sutton Vesey	855	11.8	0	0.0
Sutton Walmley & Minworth	1,015	7.1	45	0.4
Sutton Wylde Green	210	3.4	0	0.0
Tyseley & Hay Mills	1,450	17.5	75	0.9
Ward End	1,085	8.0	5	0.0
Weoley & Selly Oak	935	5.8	20	0.1
Yardley East	860	10.7	25	0.3
Yardley West & Stechford	405	6.0	-10	-0.1
Birmingham	1,075	13.3	60	0.8

Table 5 - Ward Youth 18-24 Claimant Unemployment April 2023

Area	Claimant Count	Claimant Proportion %	Monthly Change in Claimants	Monthly Change in Proportion %
Acocks Green	220	9.3	-5	-0.2
Allens Cross	120	12.8	5	0.5
Alum Rock	435	12.8	25	0.7
Aston	460	16.1	25	0.9
Balsall Heath West	140	7.5	-10	-0.5
Bartley Green	265	12.4	5	0.2
Billesley	175	10.3	-5	-0.3
Birchfield	235	15.1	15	1.0
Bordesley & Highgate	220	8.4	20	0.8
Bordesley Green	190	12.5	15	1.0
Bournbrook & Selly Park	145	0.9	-5	0.0
Bournville & Cotteridge	100	5.7	-5	-0.3
Brandwood & King's Heath	120	8.2	0	0.0
Bromford & Hodge Hill	220	9.0	-5	-0.2
Castle Vale	105	11.5	5	0.5
Druids Heath & Monyhull	125	12.4	-5	-0.5
Edgbaston	90	1.3	0	0.0
Erdington	210	13.1	-5	-0.3
Frankley Great Park	145	14.5	0	0.0
Garretts Green	105	9.7	-5	-0.5
Glebe Farm & Tile Cross	270	12.6	-5	-0.2
Gravelly Hill	135	11.0	0	0.0
Hall Green North	195	8.1	5	0.2
Hall Green South	40	5.0	5	0.6
Handsworth	230	16.7	10	0.7
Handsworth Wood	180	8.2	-5	-0.2
Harborne	145	5.6	0	0.0
Heartlands	150	9.3	0	0.0
Highter's Heath	75	9.2	-10	-1.2
Holyhead	180	13.1	20	1.5
King's Norton North	70	7.6	5	0.5
King's Norton South	115	12.3	0	0.0
Kingstanding	245	12.2	-5	-0.2
Ladywood	240	3.8	10	0.2
Longbridge & West Heath	180	11.0	10	0.6
Lozells	170	13.4	5	0.4
Moseley	165	8.8	5	0.3
Nechells	190	3.8	-5	-0.1
Newtown	280	7.8	5	0.1
North Edgbaston	365	11.0	15	0.5

Northfield	55	7.0	-10	-1.3
Oscott	135	8.4	5	0.3
Perry Barr	175	8.8	-5	-0.3
Perry Common	105	10.5	5	0.5
Pype Hayes	95	11.7	-5	-0.6
Quinton	135	8.0	-5	-0.3
Rubery & Rednal	115	12.7	10	1.1
Shard End	115	12.2	0	0.0
Sheldon	140	8.7	0	0.0
Small Heath	230	8.6	0	0.0
Soho & Jewellery Quarter	335	8.7	5	0.1
South Yardley	95	11.2	-5	-0.6
Sparkbrook & Balsall Heath East	410	13.1	20	0.6
Sparkhill	275	10.0	0	0.0
Stirchley	70	9.0	0	0.0
Stockland Green	360	15.6	10	0.4
Sutton Four Oaks	10	1.7	-5	-0.8
Sutton Mere Green	15	2.4	5	0.8
Sutton Reddicap	50	6.4	-5	-0.6
Sutton Roughley	25	3.4	0	0.0
Sutton Trinity	15	3.0	-5	-1.0
Sutton Vesey	40	2.5	-5	-0.3
Sutton Walmley & Minworth	35	3.4	5	0.5
Sutton Wylde Green	30	5.0	5	0.8
Tyseley & Hay Mills	175	14.3	-10	-0.8
Ward End	190	11.3	15	0.9
Weoley & Selly Oak	230	8.4	0	0.0
Yardley East	65	7.0	0	0.0
Yardley West & Stechford	180	13.8	10	0.8
Birmingham	11,360	8.7	170	0.1